

Basic facts about Katesgrove Ward

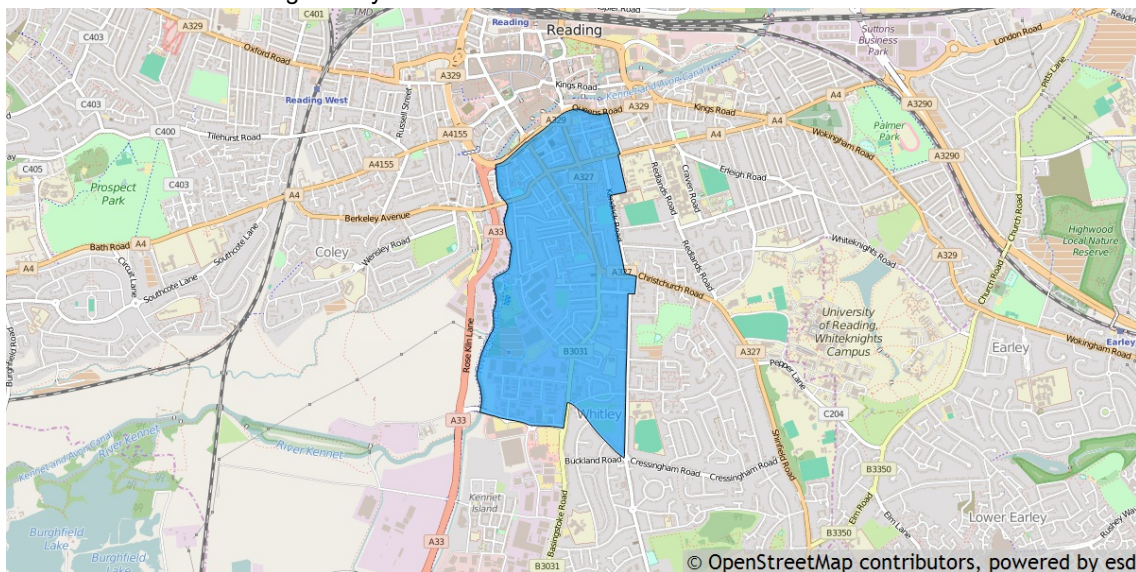
This report provides a summary of the latest available information on the demographic and socio-economic make-up of the Katesgrove Ward within Reading Unitary. It looks at the population structure and provides information on the economic, housing and educational achievement of the Ward.

This report is part of a series of reports available from the Local Government Association's LG Inform Plus service. Other free reports include demographic and economic profiles of Reading and a health and wellbeing profile which enables a side by side comparison of all Wards in Reading .

If you want to be able to create your own tables, charts and maps for Wards and other areas within your authority's boundaries, or build a custom small area report using the full set of national and local data stored in our database, why not subscribe to LG Inform Plus and access these and many other useful tools. To find out more about our service please telephone 020 7664 3195, email:

lginformplus@local.gov.uk or take a look at <http://about.esd.org.uk/subscription-benefits>.

Katesgrove is one of the 16 Wards of Reading. It has an area of 152 hectares which represents 3.76% of the total area of Reading Unitary.



Residents

Katesgrove has a resident population of 9,893 which represents 6.35% of the total Reading Unitary resident population of 155,698.

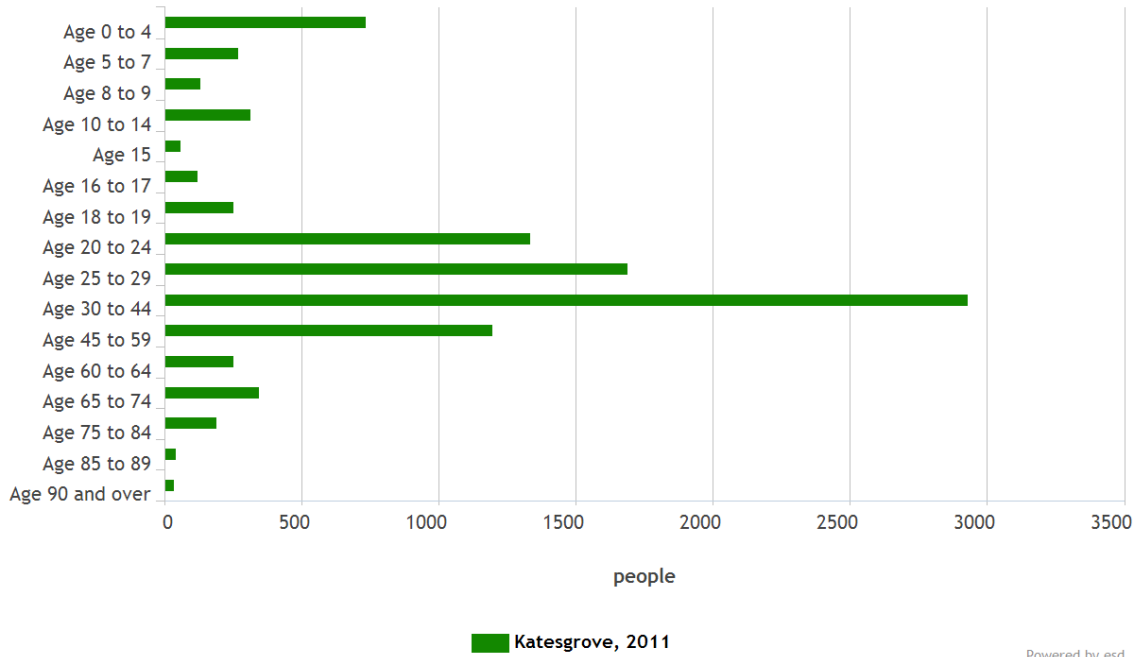
Katesgrove's resident population is 47.6% female and 52.4% male.

Age

The mean age of the Katesgrove Ward population is 32 years compared to a mean age of 35 years for residents in the whole of Reading . The predominant age band in Katesgrove is Age 30 to 44 which represents 29.60% of the total Ward population.

Age structure

source: Census 2011



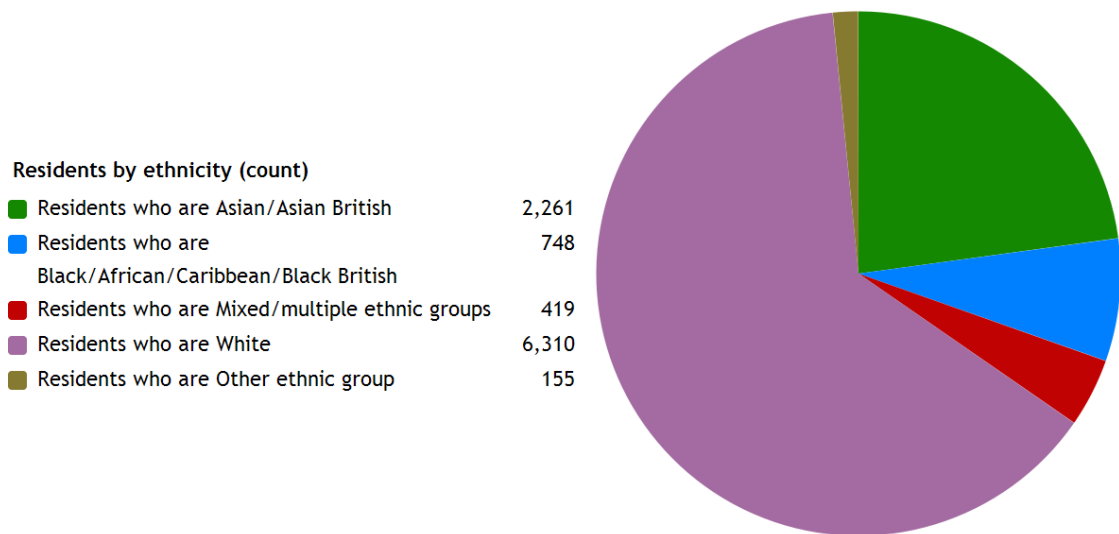
Powered by esd

Ethnicity

The largest ethnic group in Katesgrove is 'Number of usual residents who are White' with 63.8% of the Ward's population. That compares with a figure of 74.8% for Reading Unitary as a whole and 85.4% for South East .

The second largest ethnic group is 'Number of usual residents who are Asian/Asian British' with 22.8% of the Ward's population. That compares with 13.6% for the Unitary as a whole and 5.2% for South East.

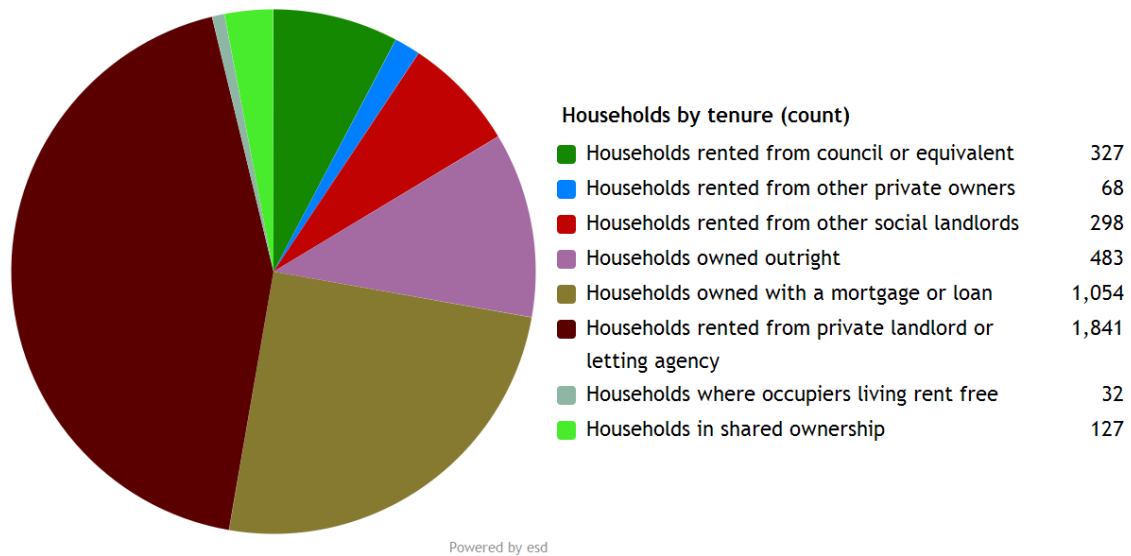
The ethnic split of Katesgrove's residents is shown below.



Powered by esd

Households

Katesgrove Ward has 4,230 households, which represent 6.73% of Reading's 62,869 households. The household split by tenure is shown below.



The largest number of households lives in 'Number of all households - Private rented: Private landlord or letting agency' accommodation with 43.5% of Katesgrove households. That compares with 24.7% for Reading Unitary as a whole and 14.1% for South East.

The second largest number of households lives in 'Percentage of all households - Owned with a mortgage or loan' accommodation with 24.9% of the Ward's households. That compares with 32.2% for the Unitary as a whole and 33.5% for South East.

Katesgrove has 592 households with dependent children aged 0 to 4. That represents 14.00% of the Ward's households.

994 households in the Ward have dependent children of all ages. That represents 23.50% of the Ward's households.

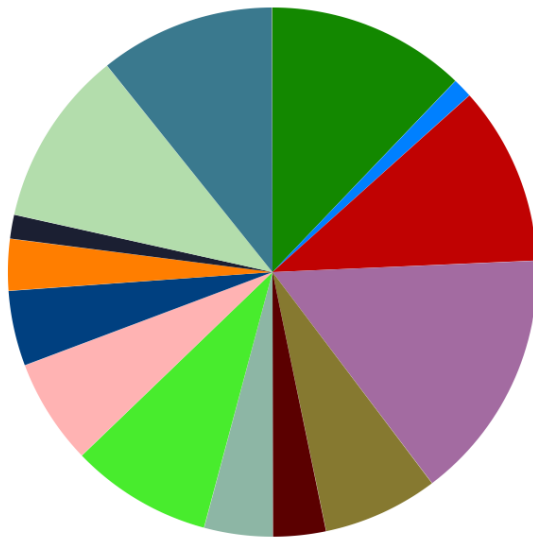
Employment

The following chart provides a breakdown of Katesgrove Ward by socio-economic classification for all residents aged 16 – 74.

The National Statistics Socio-economic Classification (NS-SEC) provides an indication of socio-economic position based on occupation. It is an Office for National Statistics standard classification. To assign a person aged 16 to 74 to an NS-SEC category their occupation title is combined with information about their employment status, whether they are employed or self-employed, and whether or not they supervise other employees. Full-time students are recorded in the 'full-time students' category regardless of whether they are economically active or not.

Residents by NS-SeC (count)

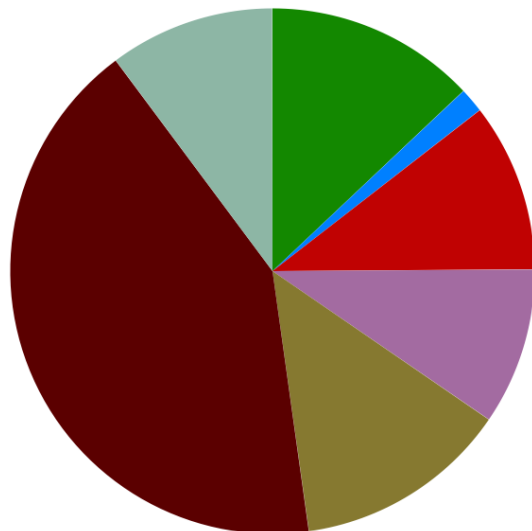
NS-SeC: Higher managerial, administrative and professional	1,362
NS-SeC: Large employers and higher managerial and administrative	135
NS-SeC: Higher professional	1,227
NS-SeC: Lower managerial, administrative and professional	1,725
NS-SeC: Intermediate	790
NS-SeC: Small employers and own account workers	362
NS-SeC: Lower supervisory and technical	468
NS-SeC: Semi-routine occupations	968
NS-SeC: Routine occupations	725
NS-SeC: Never worked and long-term unemployed	516
NS-SeC: Never worked	353
NS-SeC: Long-term unemployed	163
NS-SeC: Not classified	1,205
NS-SeC: Full-time students	1,205
NS-SeC: Not classifiable for other reasons	0



Powered by esd

The largest group is National Statistics Socio-Economic Classification - 2. Lower managerial, administrative and professional occupations representing 21.20% of the Ward's population.

Education



Residents by educational qualifications (count)

No qualifications	1,089
Apprenticeship	128
Level 1 qualifications	871
Level 2 qualifications	810
Level 3 qualifications	1,109
Level 4 qualifications and above	3,523
Other qualifications	855

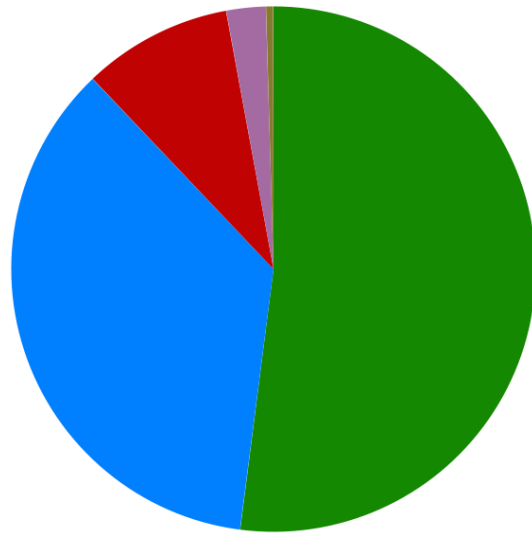
Powered by esd

42.00% of Katesgrove's residents have achieved level 4 qualifications and above compared to 34.80% in Reading as a whole and 13.00% of Katesgrove's residents have no qualifications compared to 17.40% in Reading .

Health

Residents by level of health (count)

Very good health	5,148
Good health	3,548
Fair health	912
Bad health	240
Very bad health	45



Powered by esd

Katesgrove has 240 (2.4%) residents that report being in bad health and 45 (0.5%) residents that report being in very bad health.

Its ranking for the number of residents in very bad health is 2 (out of 16 Wards) within Reading.

Further information

This report provides a selection of information about your authority. To get more information and create charts, tables and maps for your own reports, you could consider subscribing to LG Inform Plus. See <http://about.esd.org.uk/subscription-benefits> or contact the LG Inform Plus team at lginformplus@local.gov.uk with any queries. Subscriptions go towards supporting the sustainability of the local government information standards and LG Inform Plus tools for the benefit of the whole sector.

References

This report was generated using data from:

[Office for National Statistics; Census 2011](#)