

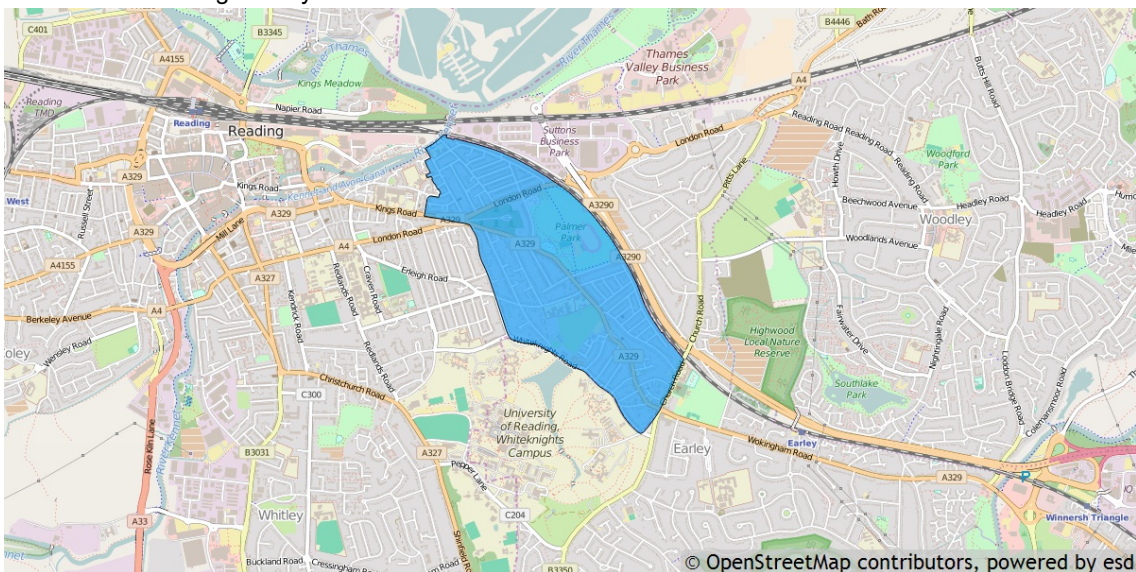
## Basic facts about Park Ward

This report provides a summary of the latest available information on the demographic and socio-economic make-up of the Park Ward within Reading Unitary. It looks at the population structure and provides information on the economic, housing and educational achievement of the Ward.

This report is part of a series of reports available from the Local Government Association's LG Inform Plus service. Other free reports include demographic and economic profiles of Reading and a health and wellbeing profile which enables a side by side comparison of all Wards in Reading .

If you want to be able to create your own tables, charts and maps for Wards and other areas within your authority's boundaries, or build a custom small area report using the full set of national and local data stored in our database, why not subscribe to LG Inform Plus and access these and many other useful tools. To find out more about our service please telephone 020 7664 3195, email: [lginformplus@local.gov.uk](mailto:lginformplus@local.gov.uk) or take a look at <http://about.esd.org.uk/subscription-benefits>.

Park is one of the 16 Wards of Reading. It has an area of 133 hectares which represents 3.29% of the total area of Reading Unitary.



### Residents

Park has a resident population of 11,102 which represents 7.13% of the total Reading Unitary resident population of 155,698.

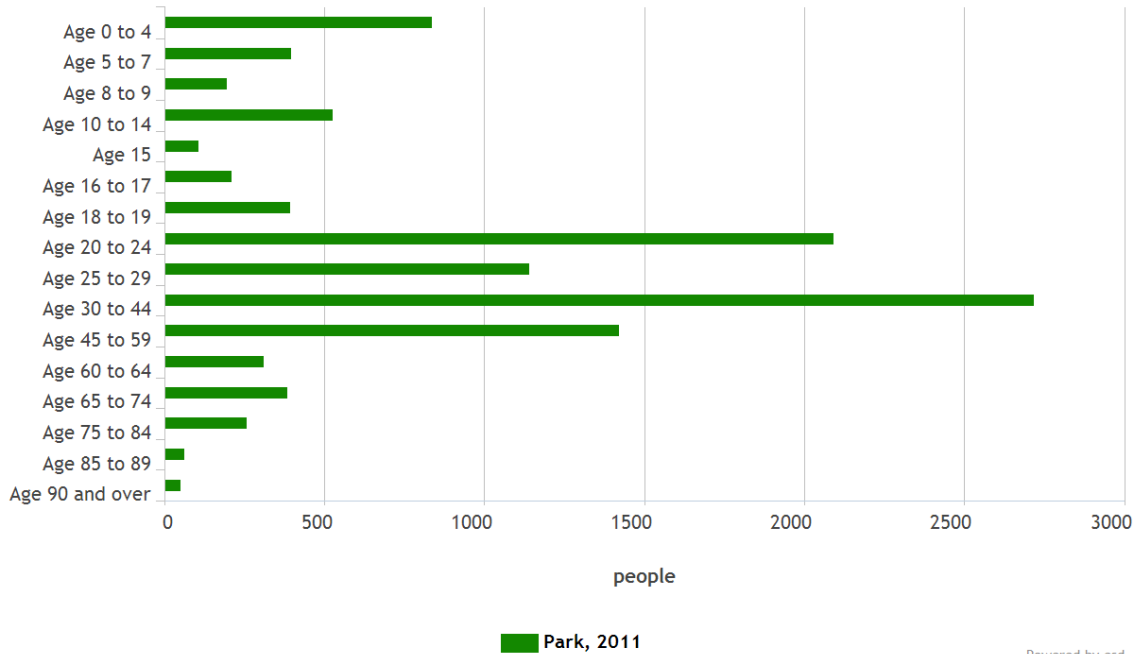
Park's resident population is 48.1% female and 51.9% male.

### Age

The mean age of the Park Ward population is 31 years compared to a mean age of 35 years for residents in the whole of Reading . The predominant age band in Park is Age 30 to 44 which represents 24.50% of the total Ward population.

### Age structure

source: Census 2011



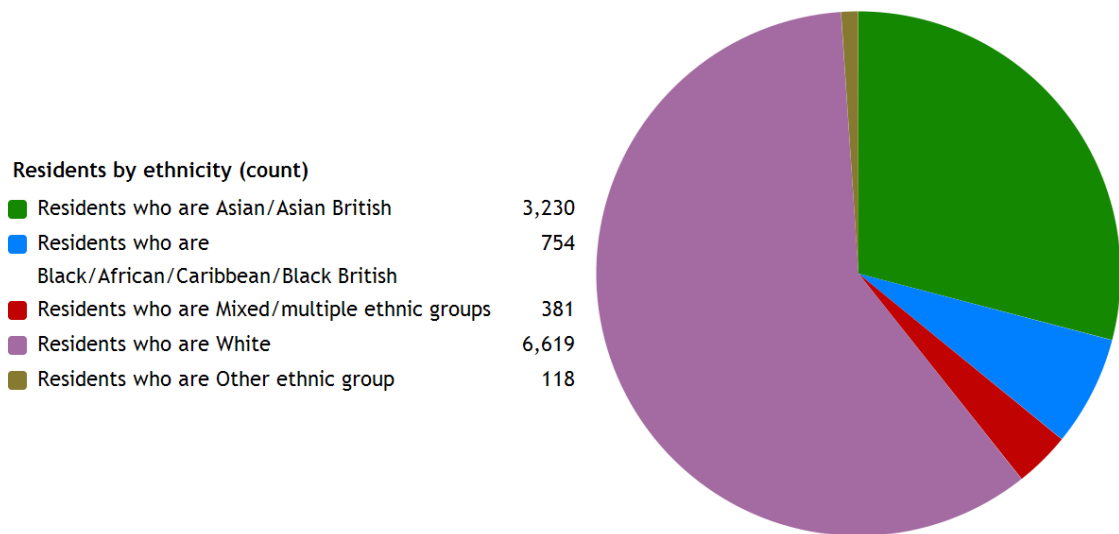
Powered by esd

### Ethnicity

The largest ethnic group in Park is 'Number of usual residents who are White' with 59.7% of the Ward's population. That compares with a figure of 74.8% for Reading Unitary as a whole and 85.4% for South East .

The second largest ethnic group is 'Number of usual residents who are Asian/Asian British' with 29.1% of the Ward's population. That compares with 13.6% for the Unitary as a whole and 5.2% for South East.

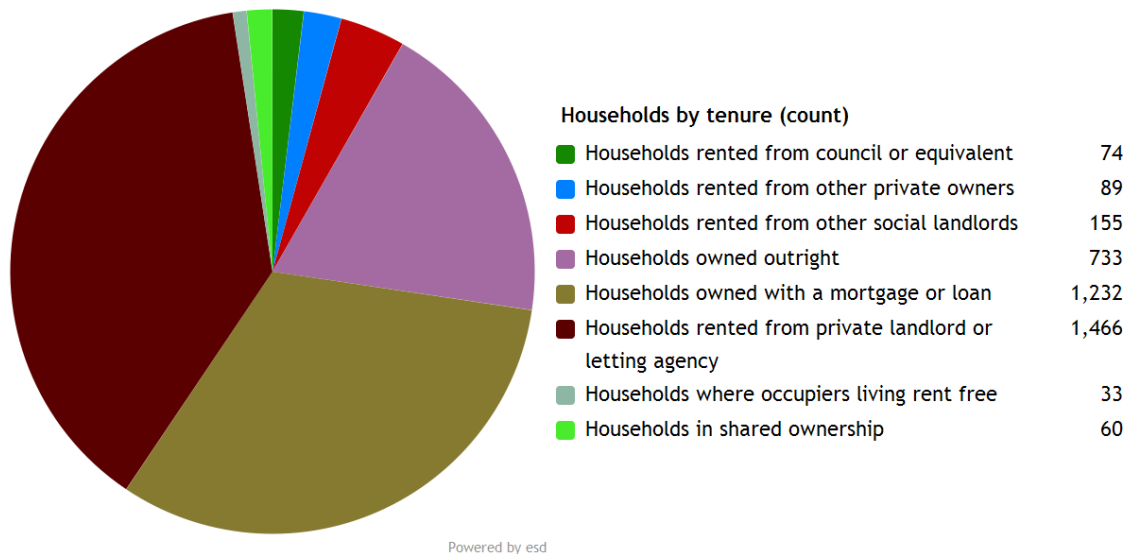
The ethnic split of Park's residents is shown below.



Powered by esd

## Households

Park Ward has 3,842 households, which represent 6.11% of Reading's 62,869 households. The household split by tenure is shown below.



The largest number of households lives in 'Number of all households - Private rented: Private landlord or letting agency' accommodation with 38.2% of Park households. That compares with 24.7% for Reading Unitary as a whole and 14.1% for South East.

The second largest number of households lives in 'Percentage of all households - Owned with a mortgage or loan' accommodation with 32.1% of the Ward's households. That compares with 32.2% for the Unitary as a whole and 33.5% for South East.

Park has 644 households with dependent children aged 0 to 4. That represents 16.80% of the Ward's households.

1,252 households in the Ward have dependent children of all ages. That represents 32.60% of the Ward's households.

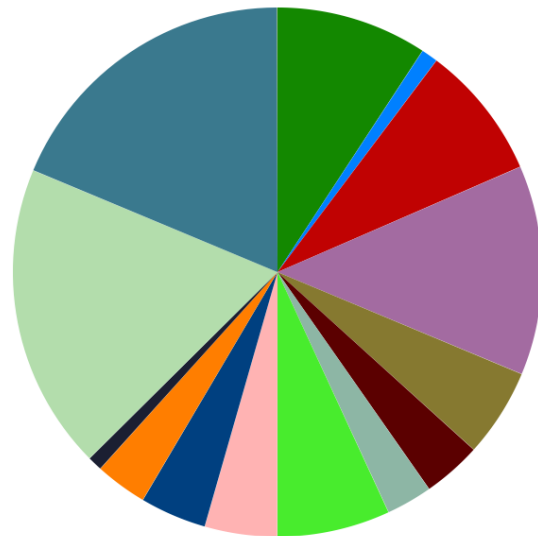
## Employment

The following chart provides a breakdown of Park Ward by socio-economic classification for all residents aged 16 – 74.

The National Statistics Socio-economic Classification (NS-SEC) provides an indication of socio-economic position based on occupation. It is an Office for National Statistics standard classification. To assign a person aged 16 to 74 to an NS-SEC category their occupation title is combined with information about their employment status, whether they are employed or self-employed, and whether or not they supervise other employees. Full-time students are recorded in the 'full-time students' category regardless of whether they are economically active or not.

### Residents by NS-SeC (count)

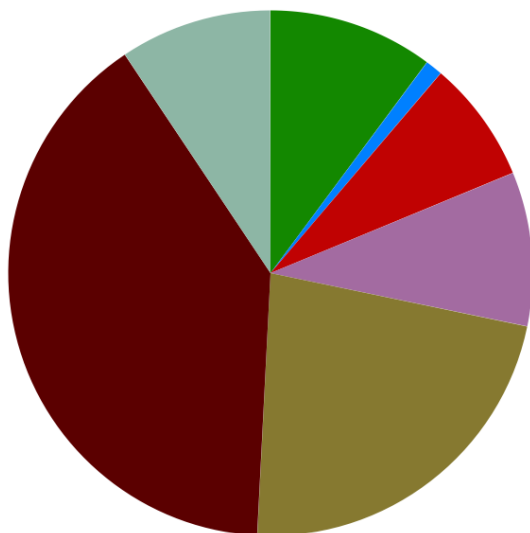
NS-SeC: Higher managerial, administrative and professional	1,179
NS-SeC: Large employers and higher managerial and administrative	130
NS-SeC: Higher professional	1,049
NS-SeC: Lower managerial, administrative and professional	1,635
NS-SeC: Intermediate	691
NS-SeC: Small employers and own account workers	455
NS-SeC: Lower supervisory and technical	360
NS-SeC: Semi-routine occupations	882
NS-SeC: Routine occupations	563
NS-SeC: Never worked and long-term unemployed	519
NS-SeC: Never worked	406
NS-SeC: Long-term unemployed	113
NS-SeC: Not classified	2,387
NS-SeC: Full-time students	2,387
NS-SeC: Not classifiable for other reasons	0



Powered by esd

The largest group is National Statistics Socio-Economic Classification - Not classified representing 27.50% of the Ward's population.

### Education



### Residents by educational qualifications (count)

No qualifications	921
Apprenticeship	96
Level 1 qualifications	680
Level 2 qualifications	857
Level 3 qualifications	2,039
Level 4 qualifications and above	3,599
Other qualifications	847

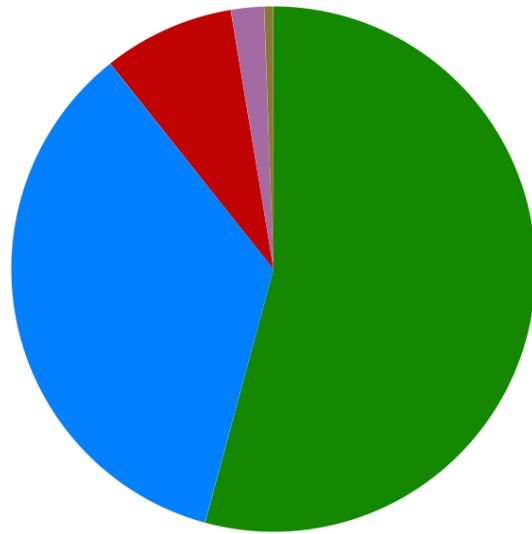
Powered by esd

39.80% of Park's residents have achieved level 4 qualifications and above compared to 34.80% in Reading as a whole and 10.20% of Park's residents have no qualifications compared to 17.40% in Reading .

## Health

### Residents by level of health (count)

Very good health	6,020
Good health	3,894
Fair health	900
Bad health	226
Very bad health	62



Powered by esd

Park has 226 (2.0%) residents that report being in bad health and 62 (0.6%) residents that report being in very bad health.

Its ranking for the number of residents in very bad health is 4 (out of 16 Wards) within Reading.

## Further information

This report provides a selection of information about your authority. To get more information and create charts, tables and maps for your own reports, you could consider subscribing to LG Inform Plus. See <http://about.esd.org.uk/subscription-benefits> or contact the LG Inform Plus team at [lginformplus@local.gov.uk](mailto:lginformplus@local.gov.uk) with any queries. Subscriptions go towards supporting the sustainability of the local government information standards and LG Inform Plus tools for the benefit of the whole sector.

## References

This report was generated using data from:

[Office for National Statistics; Census 2011](#)