

Summary

Just over one in six children in Reading belong to a household below the poverty line, reflecting the national picture. The highest concentrations of child poverty are in areas of South and West Reading.

Children in low-income families local measure

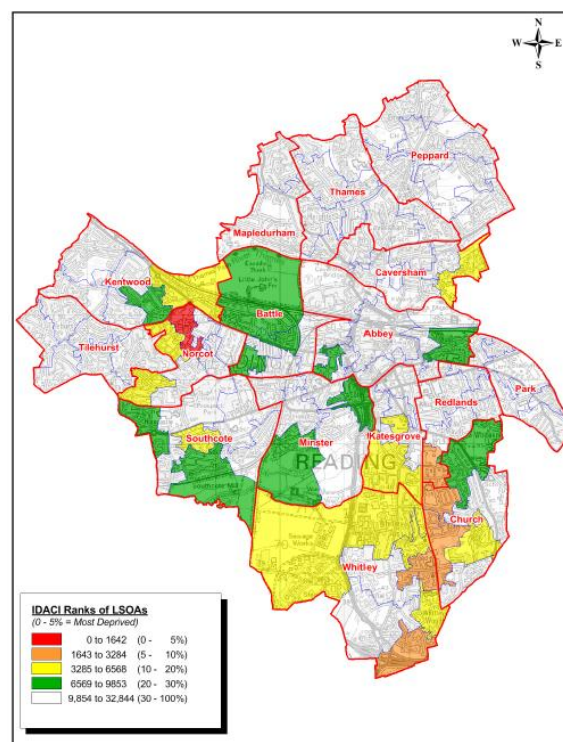
At the local level, the 'children in low-income families' measure provides a broad proxy for relative low-income child poverty.

No children in families in receipt of CTC (<60% median income) or IS/JSA	% of children in low-income families	South East	England
5,685	16.1%	12.3%	16.6%

Source: HM Revenues & Customs 2015

IMD 2015: Index of income deprivation affecting children

Reading ranks 82nd out of 326 local authorities on the Index of Income Deprivation Affecting Children (part of the Index of Multiple Deprivation 2015), with 17 Lower Super Output Areas (LSOAs) falling within the 20% most deprived nationally, these areas home to 15.5% of Reading's children and young people. One LSOA falls within the 5% most deprived nationally.



Title: IDACI
Index of Multiple Deprivation 2015
Produced by GIS & Mapping Services Date: 14/01/2016 Scale at A4: 1:46000
Ref: G:\MapInfo\Data\Client_databases\Chief_Executives\IMD Maps 2015\IDACI1.wor

© Crown copyright and database rights 2016 Ordnance Survey 100010672
Department for Communities and Local Government. Index of Deprivation 2015.
Source: Department for Communities and Local Government 2015

Lone parent families

Almost three quarters of children in poverty live in lone parent households, higher than both the national and regional figures. Not surprisingly, areas in Reading with lone parents claiming key benefits match the areas with high levels of child poverty.

Children in families in receipt of CTC (<60% median income) or IS/JSA					% of children in poverty
Number			%		
Couple	Lone parent	All	Couple	Lone parent	All families
1,450	4,240	5,685	25.5%	74.6%	16.1%

Source: HM Revenues & Customs 2015

Free school meals and pupil premium

	% pupils eligible for free school meals in state-funded schools in 2016	
	primary	secondary
Reading	14.3%	11.8%
South East	9.9%	8.4%
England	14.1%	12.9%

26.3% of Reading pupils are eligible for pupil premium (5,053 pupils), the highest percentage in Berkshire, compared with 21.8% for the South East and 28.3% for England. This has decreased since the previous year, when 27.3% were eligible in 2016/17.

Source: Department for Education 2016

Educational attainment

	Foundation Stage	Key Stage 2	Key Stage 4 GCSEs
	good level of development (% children achieving at least the expected level)	level 4+ (% achieving level 4 or above)	average attainment 8 score
Reading	69	59	49.6
South East	72	55	51.0
England	67	54	50.1

Source: Department for Education 2017

In Reading, performance at Foundation Stage in 2017 is similar to 2016 and in line with the national average. Educational attainment at Key Stage 2 has increased since 2016 but is lower than the national average. GCSE results are above the national averages on all of the measures, and above the regional on most, though the average attainment 8 score has decreased since 2016. The attainment gap between those claiming free school meals and all students at GCSE level is greater than that at the regional and national level.