

Summary

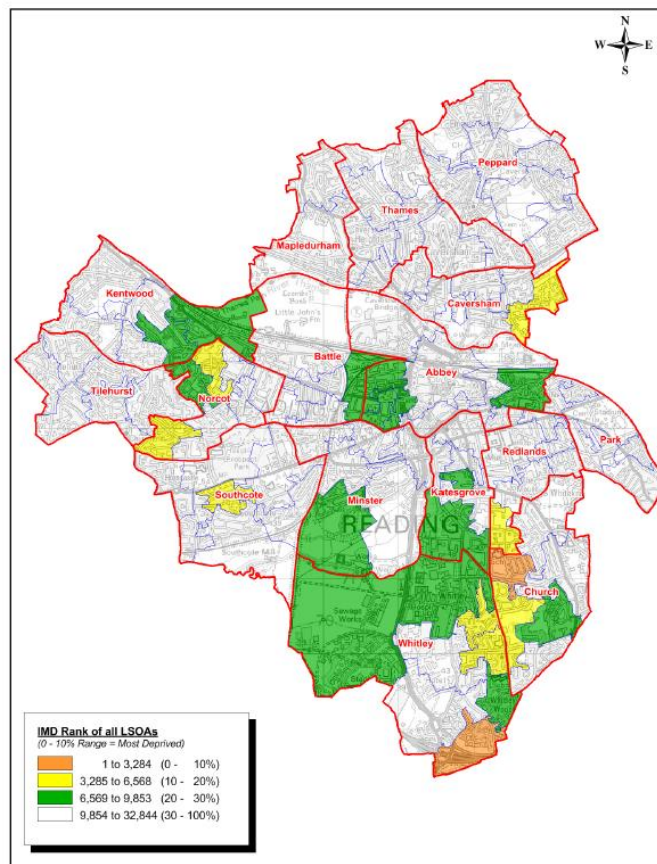
The recent economic climate and significant reform of our national welfare system have meant that many households are increasingly struggling to make ends meet. Reading has a diverse population across all income groups and a very wide cultural mix. It has extremes of both wealth and poverty in very small areas that are masked by statistics at borough and even ward levels.

Index of Multiple Deprivation 2015

The most comprehensive and widely adopted overall measure is the Index of Multiple Deprivation (IMD).

Reading as a whole is ranked 146th most deprived out of 326 local authorities in the country (down from 129th in 2010), with 10 Lower Super Output Areas (LSOAs) in the most deprived 20% nationally, and 2 LSOAs within the most deprived 10% in South Reading. This demonstrates the marked extremes at neighbourhood level which make Reading very different from most other local authorities in the South East.

IMD 2015: Overall score by lower super output area (LSOA)



Title: Index of Multiple Deprivation 2015

Produced by GIS & Mapping Services Date: 15/01/2015 Scale at A4: 1:46,000
Ref: G:\Mapinfo\Data\Client datasets\Chief Executives\IMD Maps 2015\IMD wor

© Crown copyright and database rights 2016 Ordnance Survey 100019672.
Department for Communities and Local Government, Indices of Deprivation 2015.

