

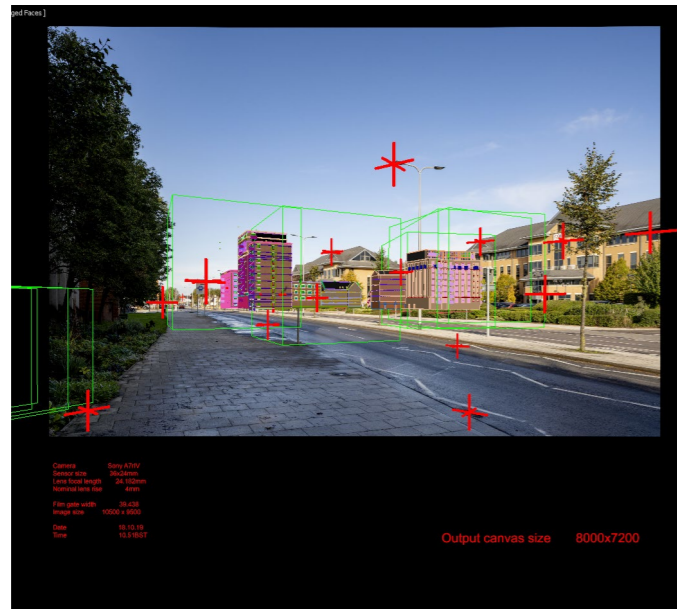
3.4 Screen grab of camera location in 3DS Max software



3.5 Screen grab of calculated horizon line



3.6 Screen grab of camera matching to survey data



3.7 Screen grab of model matched to photograph



3.8 Final camera matched photomontage

View P6 Winter - Reading Bridge, looking north-west

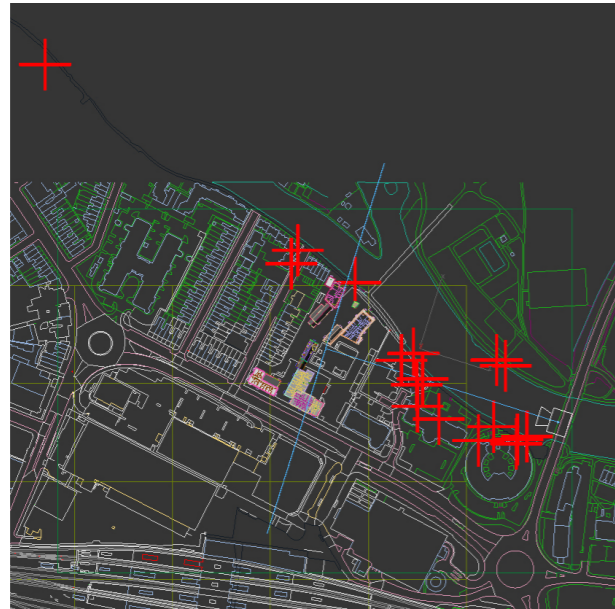
3.1 Ordinance survey co-ordinates			
Point Ref	Eastings	Northings	AOD height
1701	471752.086	174042.655	54.822
1702	471752.039	174042.617	42.706
1703	471750.756	174038.524	62.245
1704	471712.276	174041.851	56.714
1705	471671.819	174063.704	61.007
1706	471650.105	174076.569	57.147
1707	471649.201	174098.636	54.953
1708	471655.239	174104.708	48.955
1709	471645.826	174130.552	38.622
1710	471527.897	174235.962	47.811
1711	471521.430	174222.111	48.164
1712	471730.817	174123.868	37.601
1713	471739.847	174117.934	37.601
1714	471633.615	174123.708	48.857
1715	471270.024	174425.538	49.299
1716	471727.656	174055.964	39.486
1717	471761.815	174045.932	37.824
1718	471586.392	174203.061	38.620



01.2 OS survey points marked on photograph

01.3 View P6 winter camera location

Eastings	471794.699m
Northings	174060.109m
AOD height	43.135m
Distance to centre of site	266m
Bearing from North	288°



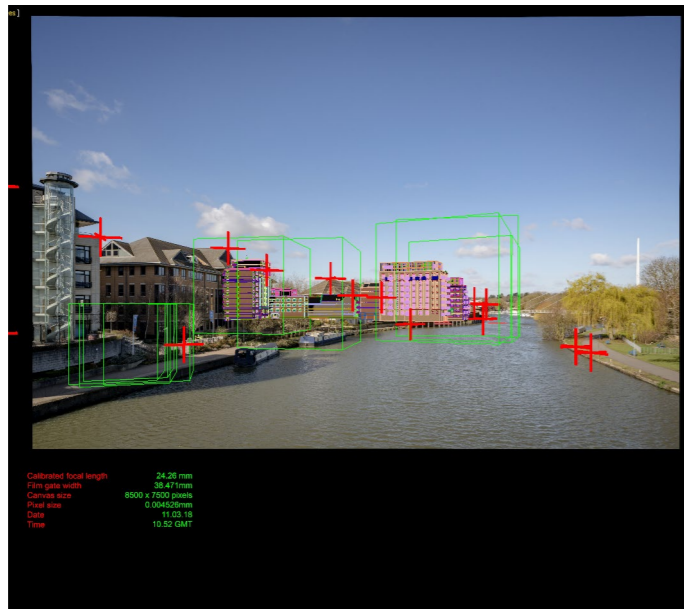
3.4 Screen grab of camera location in 3DS Max software



3.5 Screen grab of calculated horizon line



3.6 Screen grab of camera matching to survey data



3.7 Screen grab of model matched to photograph



3.8 Final camera matched photomontage

View P6A Summer - Reading Bridge, looking north-west

3.1 Ordinance survey co-ordinates			
Point Ref	Eastings	Northings	AOD height
1701	471528.496	174237.097	45.515
1702	471106.219	174529.599	52.313
1703	471519.256	174218.334	45.530
1704	471638.149	174144.592	38.607
1705	471655.237	174104.648	48.954
1706	471650.082	174076.429	56.721
1707	471695.376	174040.250	58.548
1708	471713.144	174040.683	50.799
1709	471740.807	174047.741	40.211
1710	471747.957	174040.425	62.246
1711	471760.661	174034.093	54.835
1712	471758.017	174041.894	38.304
1713	471684.441	174058.401	42.023
1714	471781.644	174093.314	36.995
1715	471774.629	174100.782	46.187
1716	471639.761	174130.681	39.987

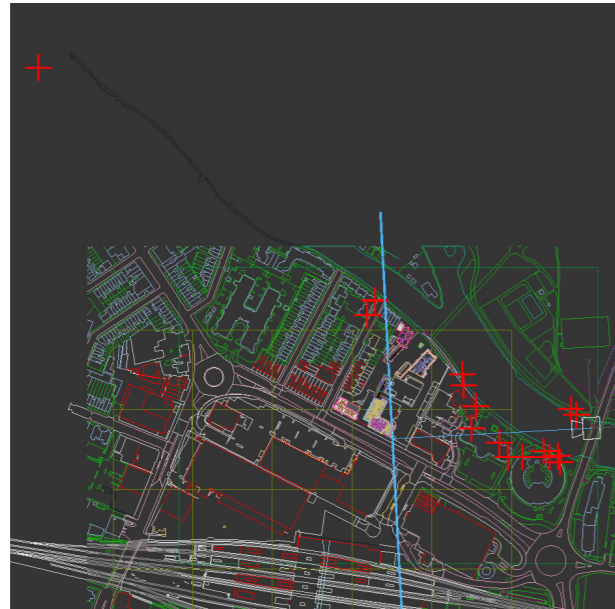


01.2 OS survey points marked on photograph



01.3 View P6A summer camera location

Eastings 471800.3175m
 Northings 174076.7249m
 AOD height 44.3424m
 Distance to centre of site 248m
 Bearing from North 267°



3.4 Screen grab of camera location in 3DS Max software



3.5 Screen grab of calculated horizon line



3.6 Screen grab of camera matching to survey data



3.7 Screen grab of model matched to photograph



3.8 Final camera matched photomontage

View P7 - Junction of Prospect Street and Peppard Road, looking south

3.1 Ordinance survey co-ordinates			
Point Ref	Eastings	Northings	AOD height
5501	471653.577	174977.009	47.563
5502	471650.691	174980.038	55.356
5503	471653.065	174952.136	48.452
5504	471461.321	175293.491	62.413
5505	471650.810	174916.110	50.006
5506	471640.107	174982.375	46.623
5507	471346.452	175269.197	47.637
5508	471633.654	174855.074	47.548
5509	471635.117	174924.015	50.552
5510	471637.851	174970.377	49.318
5511	471635.115	174980.802	48.520
5512	471639.061	174918.942	44.104
5513	471646.140	174847.514	40.822
5514	471628.543	174688.784	46.731
5515	471629.666	174855.310	50.252
5516	471639.547	174944.449	44.041
5517	471648.956	174992.157	46.105
5518	471640.929	174986.558	45.721
5519	471640.640	174969.193	45.487

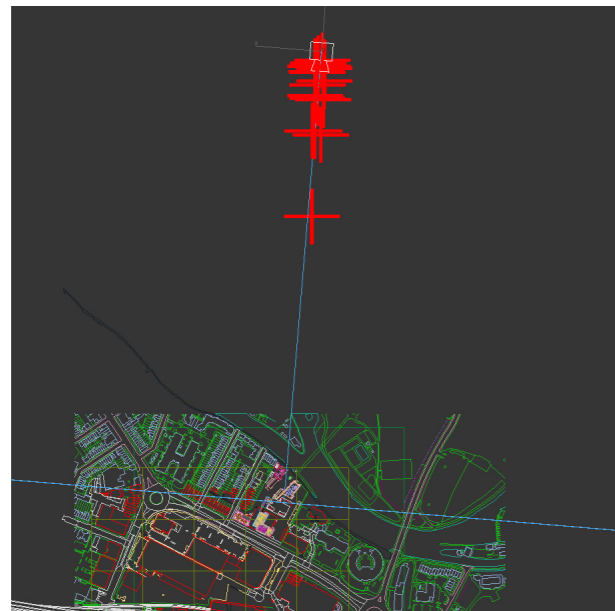


01.2 OS survey points marked on photograph



01.3 View P7 camera location

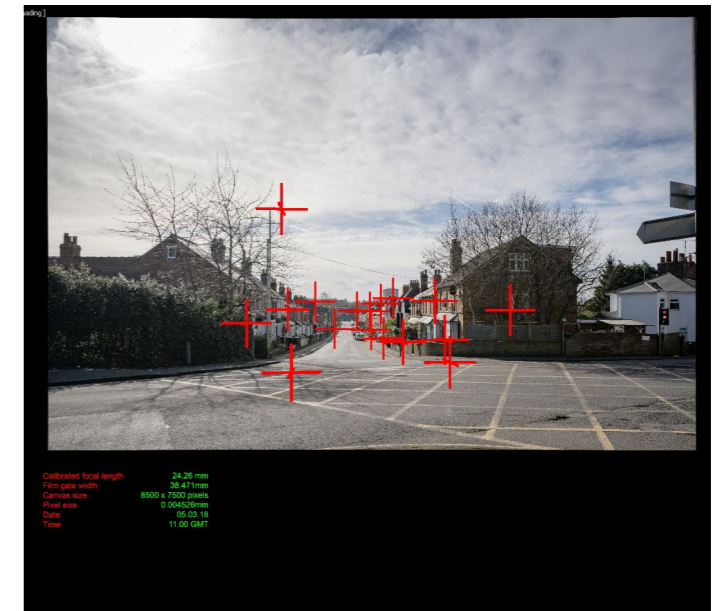
Eastings	471647.357m
Northings	175009.713m
AOD height	46.991m
Distance to centre of site	915m
Bearing from North	185°



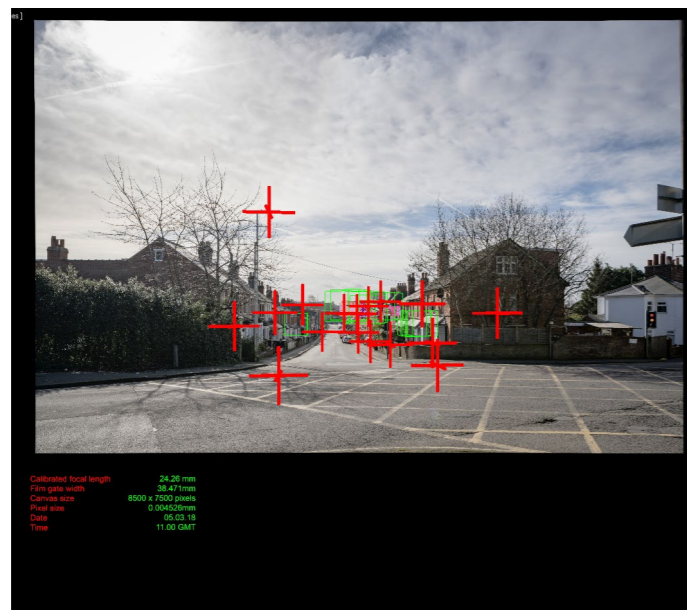
3.4 Screen grab of camera location in 3DS Max software



3.5 Screen grab of calculated horizon line



3.6 Screen grab of camera matching to survey data



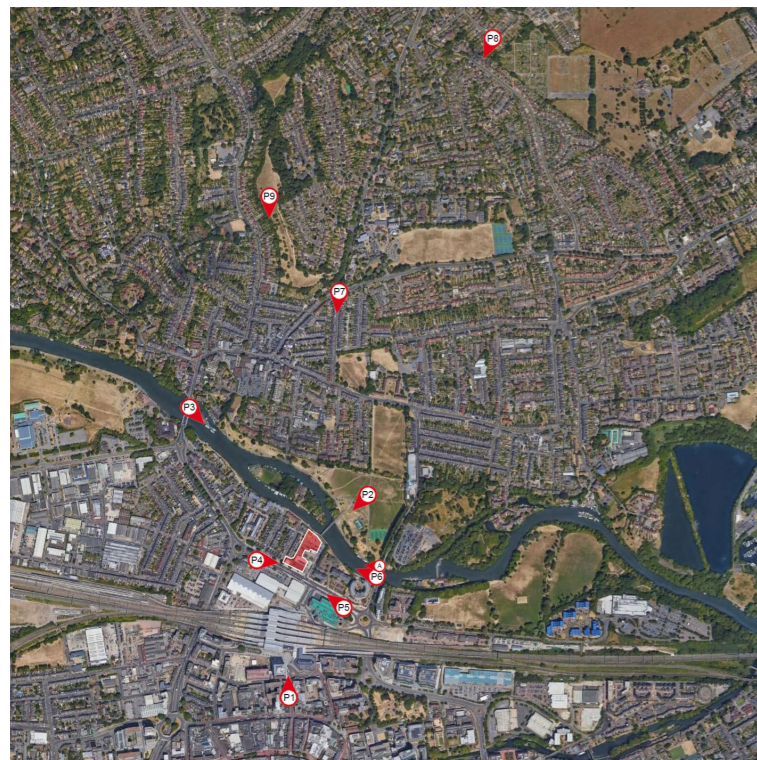
3.7 Screen grab of model matched to photograph



3.8 Final camera matched photomontage

View P8 - The Horse Close, looking south-west

3.1 Ordinance survey co-ordinates			
Point Ref	Eastings	Northings	AOD height
7001	472155.196	175831.580	72.542
7002	472153.785	175839.384	72.806
7003	472152.864	175830.401	71.078
7004	472153.403	175823.255	72.266
7005	472151.165	175828.694	72.185
7006	472150.120	175828.760	73.937
7007	472146.376	175827.823	72.217
7008	472144.378	175823.884	76.011
7009	472143.794	175826.656	72.187
7010	472149.994	175840.802	71.703
7011	472153.558	175842.298	71.784
7012	472139.252	175830.675	72.732
7013	472135.843	175824.212	76.379
7014	472138.613	175824.305	72.614
7015	472121.311	175775.857	74.615
7016	472143.297	175837.549	72.942
7017	472136.516	175831.336	72.739
7018	472140.490	175824.452	71.878
7019	472157.138	175822.290	74.489



01.2 OS survey points marked on photograph

01.3 View P8 camera location

Eastings 472152.946m
 Northings 175858.771m
 AOD height 73.068m
 Distance to centre of site 1863m
 Bearing from North 192°