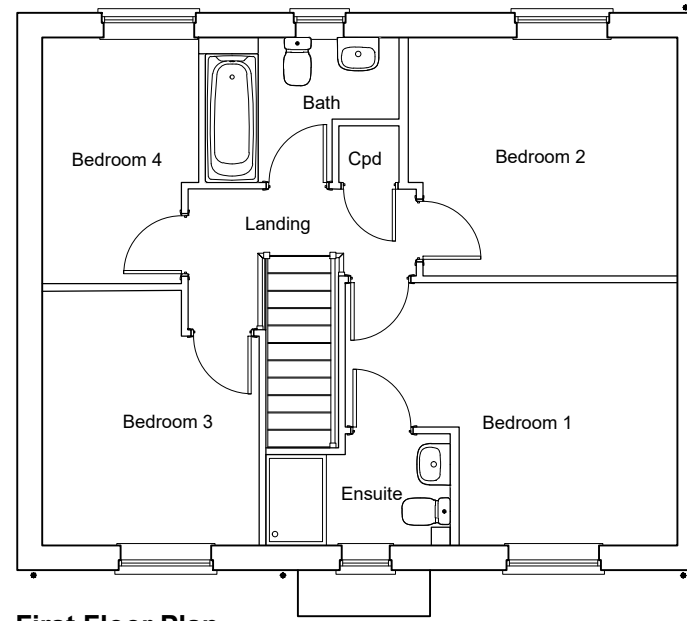
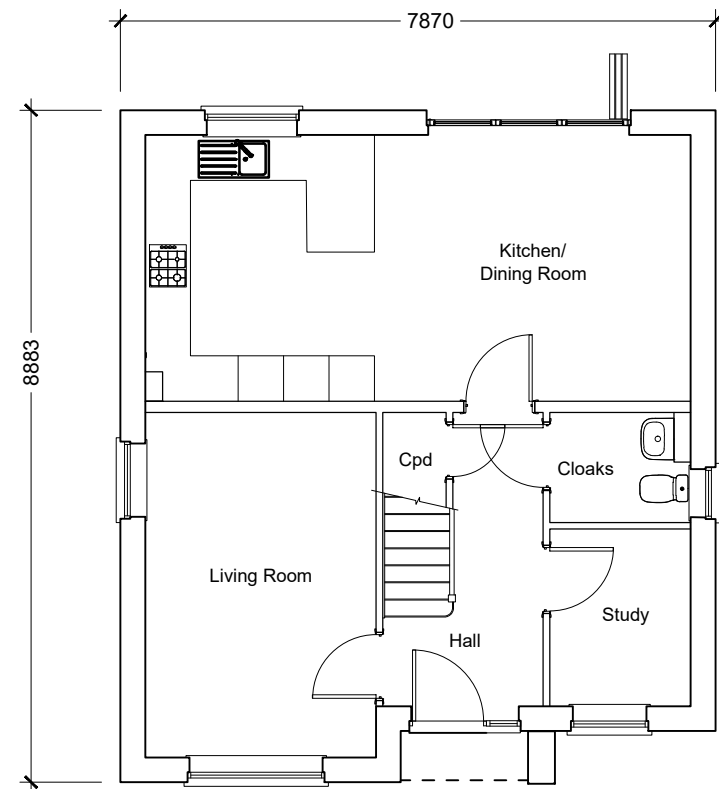


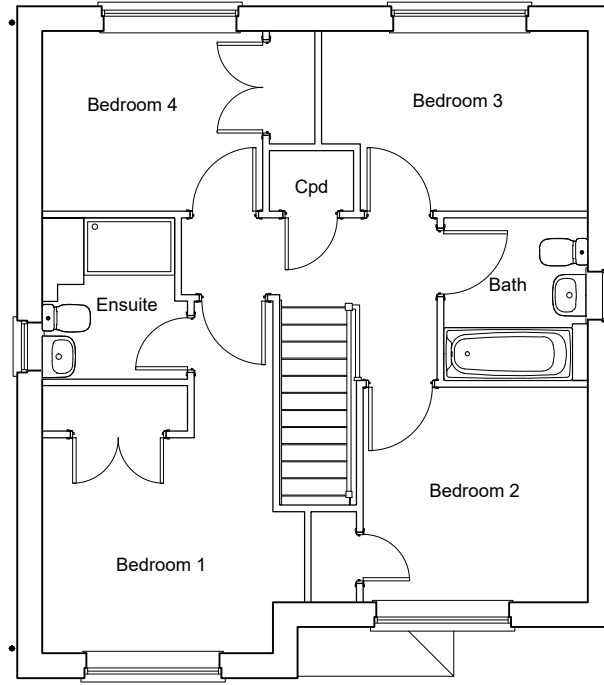
Type 18
Ground Floor Plan
 3-Bedroom House
 112.83sqm / 1214.44sqft GIA (to finishes)



First Floor Plan



Type 19
Ground Floor Plan
 4-Bedroom House
 113.11sqm / 1217.4sqft GIA (to finishes)



First Floor Plan

Client's Name
 Fairfax

Job Title
 Reading Golf Club, Kidmore End
 Road, Reading

Drawing Title
 Proposed Plans
 Types 18 and 19 - Four
 Bedrooms

Scale
 1:100 @ A3

Drawn	Checked	Date
JW	NF	19.11.21
Job No	Drawing No	Rev
6960	PL11	A

Status
PRELIMINARY

Rev	Date	Revision Details	Dr	Ch
A	24.11.21	Amended to Clients comments	JW	KE

