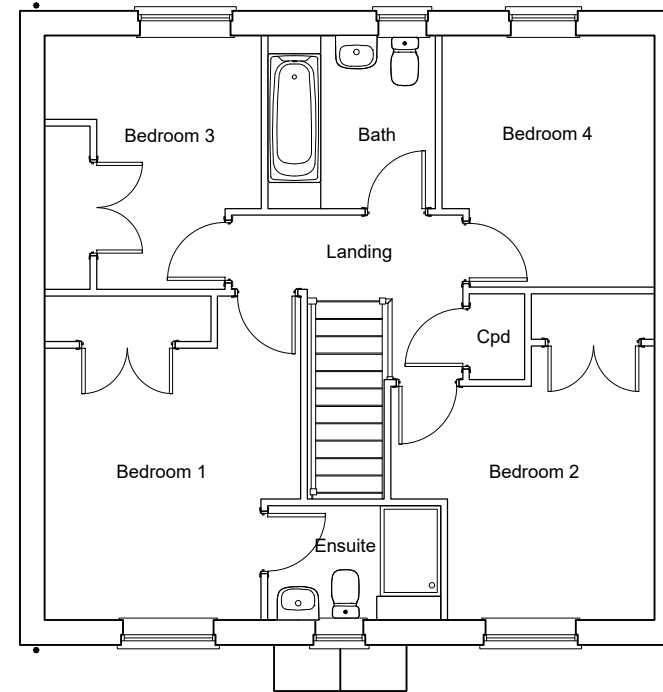
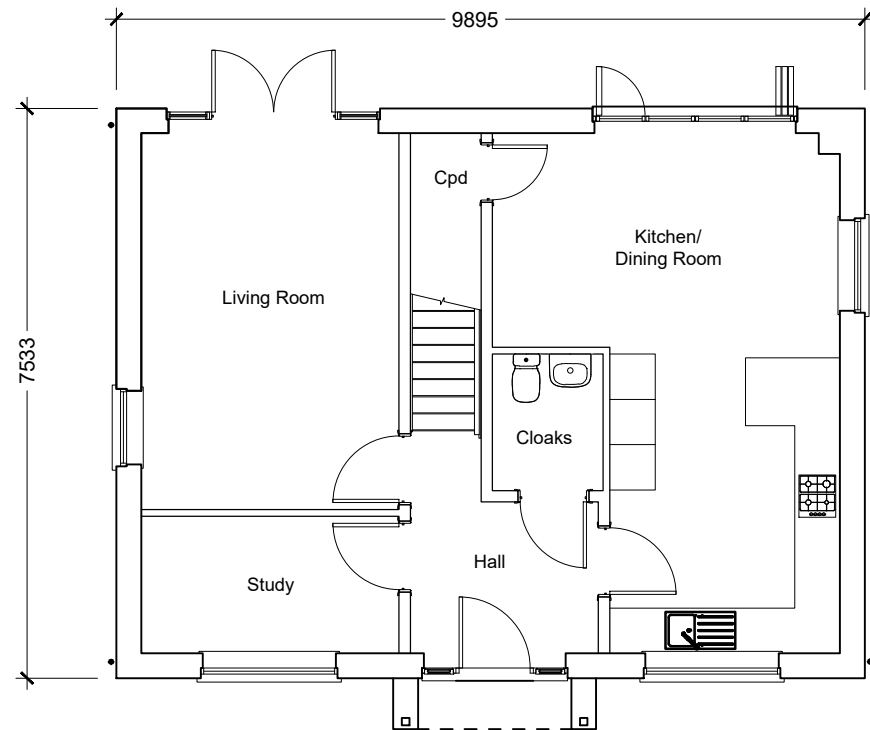


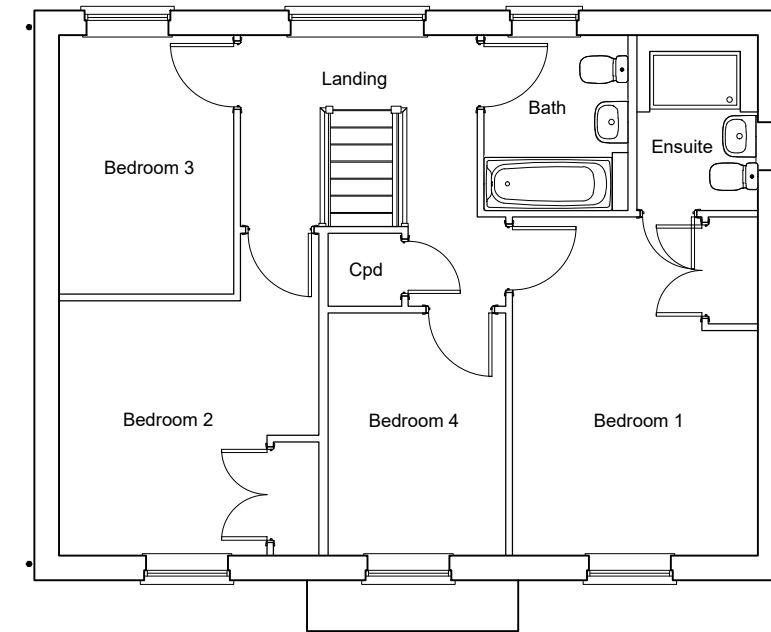
Type 20
Ground Floor Plan
 4-Bedroom House
 125.93.11sqm / 1355.48sqft GIA [to finishes]



First Floor Plan



Type 21
Ground Floor Plan
 4-Bedroom House
 127.1sqm / 1368sqft GIA [to finishes]



First Floor Plan

Client's Name
 Fairfax

Job Title
 Reading Golf Club, Kidmore End
 Road, Reading

Drawing Title
 Proposed Plans
 Types 20 and 21 - Four
 Bedrooms

Scale
 1:100 @ A3

Drawn	Checked	Date
JW	NF	19.11.21
Job No	Drawing No	Rev
6960	PL12	A
Status		
PRELIMINARY		

Rev	Date	Revision Details	Dr	Ch
A	24.11.21	Amended to Clients comments	JW	KE

