

80 Caversham Road 182252/OUT - extracts from committee report

Table 1 of officer committee report:

Table 1: Building by building - storeys, maximum height, uses and phase details

Building & Phase of development	Number of storeys	Maximum height	Use
A (phase 4)	Basement and 24 storeys (ground to 23 rd floor)	+114.18m AOD	Basement: car park / plant / bins / cycles Ground floor: Office/Retail/residential entrance. Upper floors: Residential
Area between A & B (phase 4)	Basement and ground floor (1 storey)	+46.63m AOD	Basement: energy centre Ground floor level: Retail and entrance to basement car park
B (phase 4)	Basement and 16 storeys (ground to 15 th floor)	+90.18m AOD	Basement: energy centre and plant Ground floor: residential entrance and associated facilities Upper floors: Residential
C (phase 4)	Basement and 8 storeys (ground to 7 th floor of office)	+73.18m AOD	Basement: car park, office refuse, cycles and shower/changing Ground floor: Office / 'Health club' / retail Upper floors: Office
D (phase 4)	12 (ground to 11 th floor)	+77.18m AOD	Residential
E (phase 6)	Basement and 11 storeys (ground to 10 th floor)	+74.18m AOD	Basement plant and storage Ground floor: Retail and residential Upper floors: Residential

F (phase 6)	11 storeys (ground to 10 th floor)	+74.18m AOD	Residential
G (phase 6)	8 (ground to 7 th floor)	+66.18m AOD	Ground floor: 'Health centre' and residential Upper floors: Residential
H (phase 6)	8 (ground to 7 th floor)	+68.18m AOD	Ground floor: 'Community centre' and residential Upper floors: Residential
J (phase 6)	Basement and part 5, part 7 storeys (ground to 6 th floor of offices)	+66.68m AOD;	Basement: office refuse, cycles and shower/changing. Ground floor and above: Office
TH1 (phase 4)	2 (ground and first floors)	+48.64 AOD;	Residential townhouses
TH2 (phase 6)	2 (ground and first floors)	+48.64 AOD	Residential townhouses

Figure 10 of officer committee report:

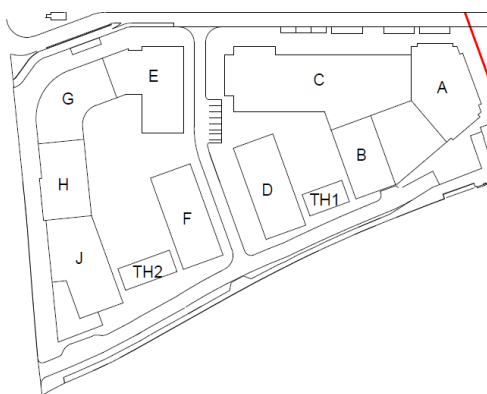


Figure 10: Titles of each building

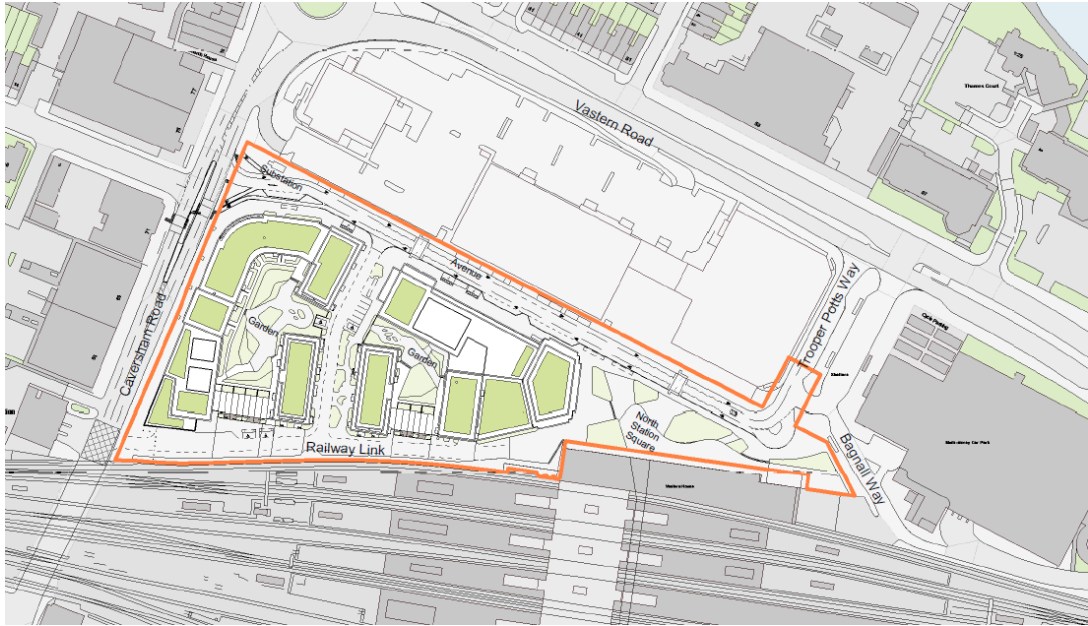


Figure 9: Extract of Proposed Site Location Plan with Application Boundary A11113 C 2 003 Rev P4, as received 22/02/2022

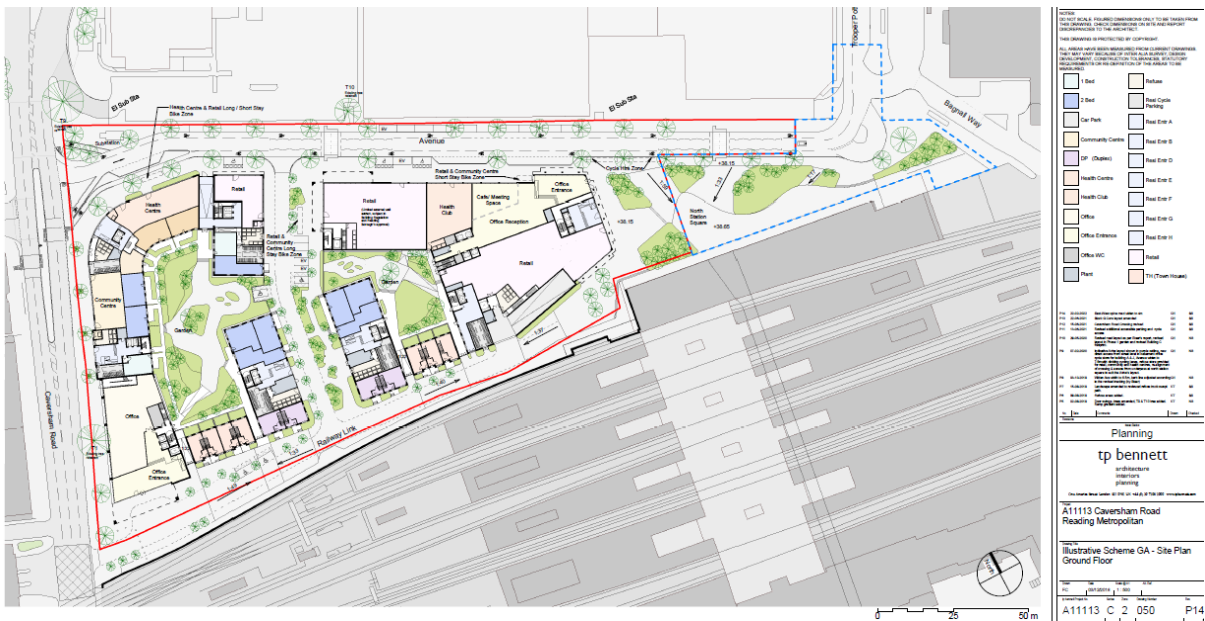
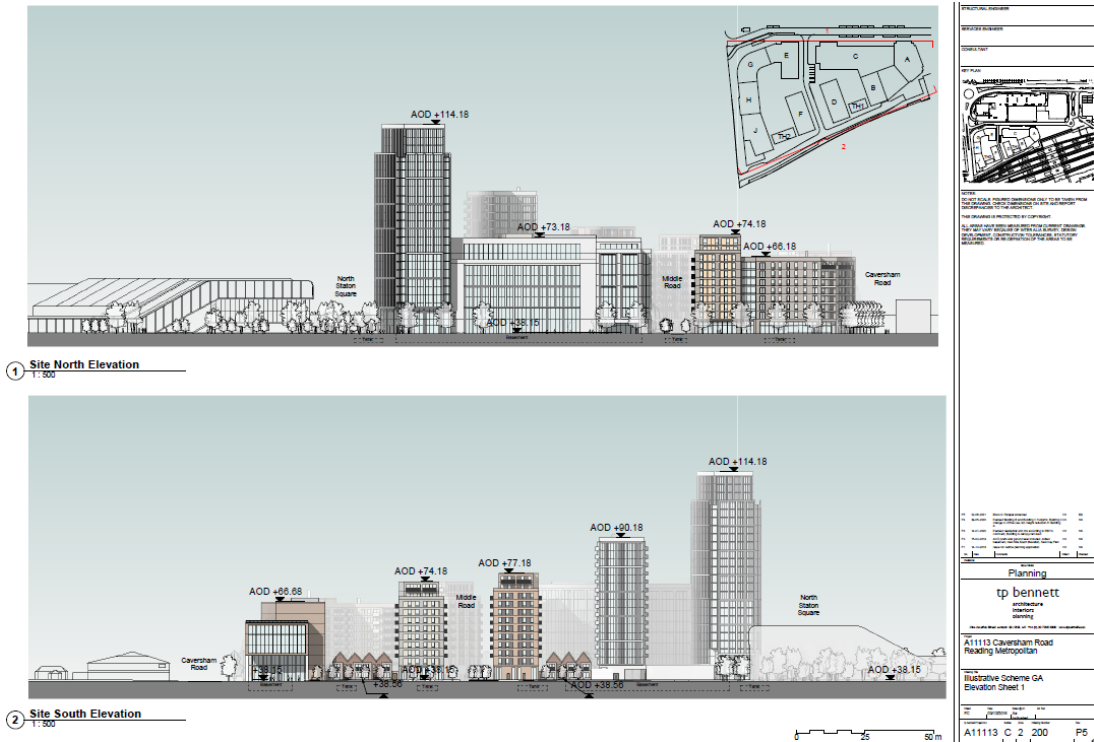


Figure 11: A11113 C 2 050 Rev P14 - Illustrative Scheme GA - Site Plan Ground Floor, as received 22/02/2022

Selection of **ILLUSTRATIVE** elevation plans (not approved plans, with Appearance being a Reserved Matter) - purely shown for information



A11113C2200 Rev P5 Illustrative Scheme GA Elevation Sheet 1, as received 28/06/2021

Site North (illustrative) elevation and Site South (illustrative) elevation



A11113C2204 Rev P6 Illustrative Scheme GA Elevation Sheet 5, as received 28/06/2021

West Site Elevation (Caversham Road)



A11113C2201 Rev P4 Illustrative Scheme GA Elevation Sheet 2, as received 03/06/2020

Looking west at Building A in the foreground



A11113C2205 Rev P4 **Illustrative Scheme GA Elevation Sheet 6**, as received
 03/06/2020
 From Middle Street looking east with Buildings C and D in the foreground



A11113C2206 Rev P3 **Illustrative Scheme GA Elevation Sheet 7**, as received
 03/06/2020
 From Middle Street looking west with Buildings F and E in the foreground