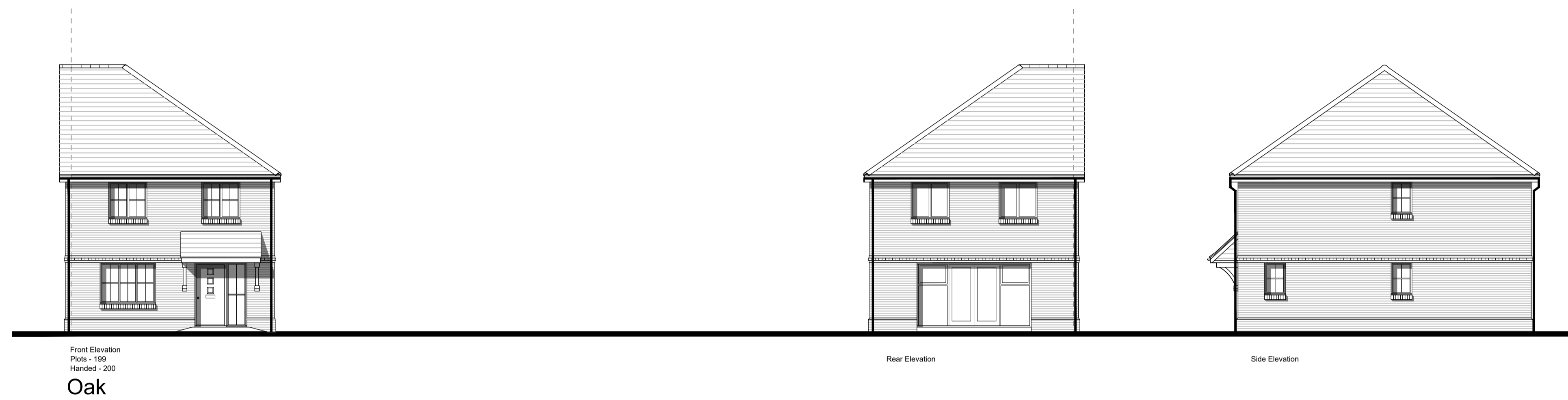
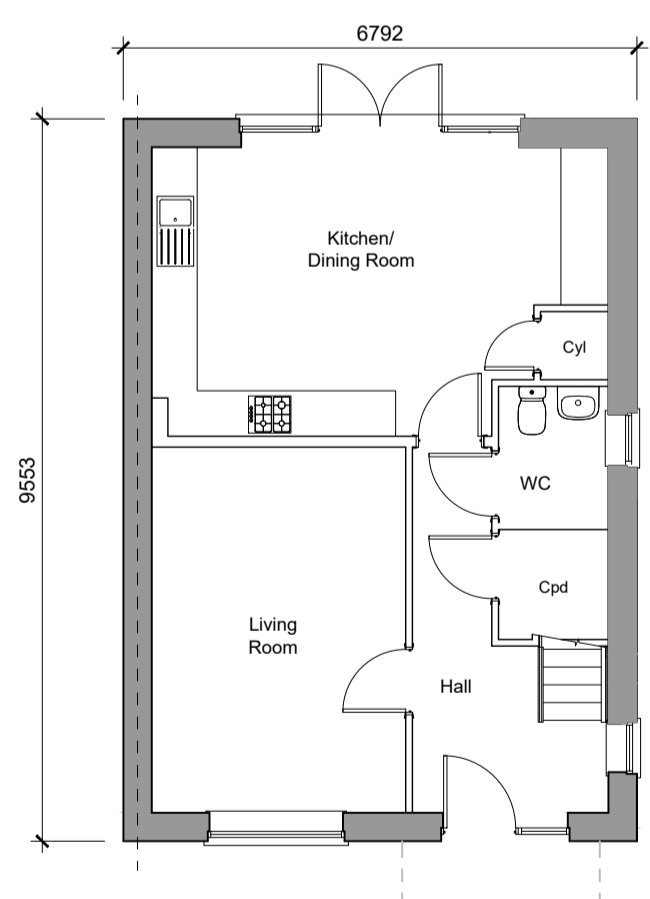


First Floor Plan



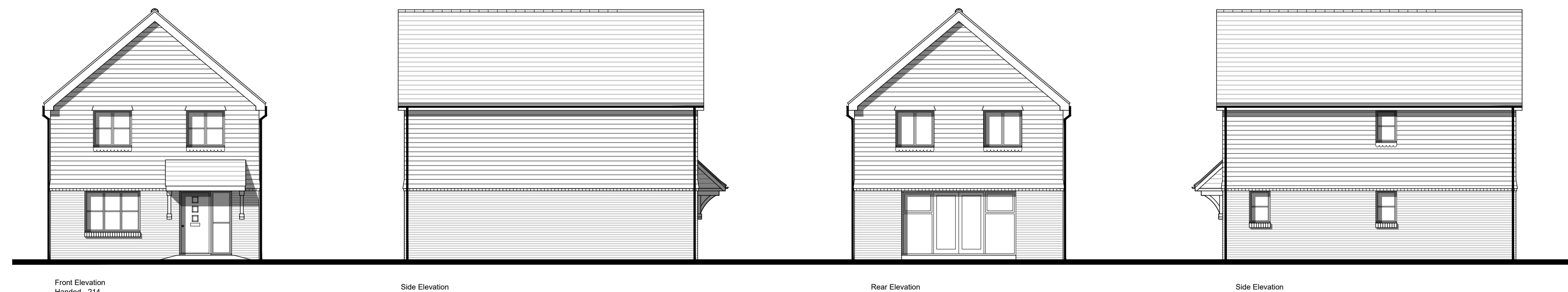
Oak



Ground Floor Plan
 4-Bedroom House
 106.23sqm / 1144sqft GFA (to include)
 Plots - 211, 199
 Handed - 210, 214, 200



Spine



Oak

Rev	Date	Revision Details	Dr	Ch
C	23.08.22	Housetypes Amended to Clients Comments	JR	NF
B	10.06.22	Housetypes Amended to Clients Comments	LP	MP
A	27.05.22	Housetypes Amended to Clients Comments	LP	MP



London: 76 Great Suffolk Street
 London, SE1 0BL
 T 0207 928 2773 E london@ecearchitecture.com
Sussex: 64 - 68 Brighton Road, Worthing
 West Sussex, BN11 2EN
 T 01903 248777 E sussex@ecearchitecture.com
Bristol: Westworks, Beacon Tower
 Colston Street, Bristol, BS1 4XE
 T 0117 214 1101 E bristol@ecwestworks.com
ECE Architecture
 www.ecearchitecture.com

Client's Name
Vistry Group

Job Title
**Reading Golf Club
 Kidmore End Road, Reading**

Drawing Title
4B5P01 - Proposed Plans and Elevations

Scale
1:100 @ A1 / 1:200 @ A3



Drawn	Checked	Date
LP	NF	03.05.2022

Job No	Drawing No	Rev
6960	PL124	C

Status
APPROVAL