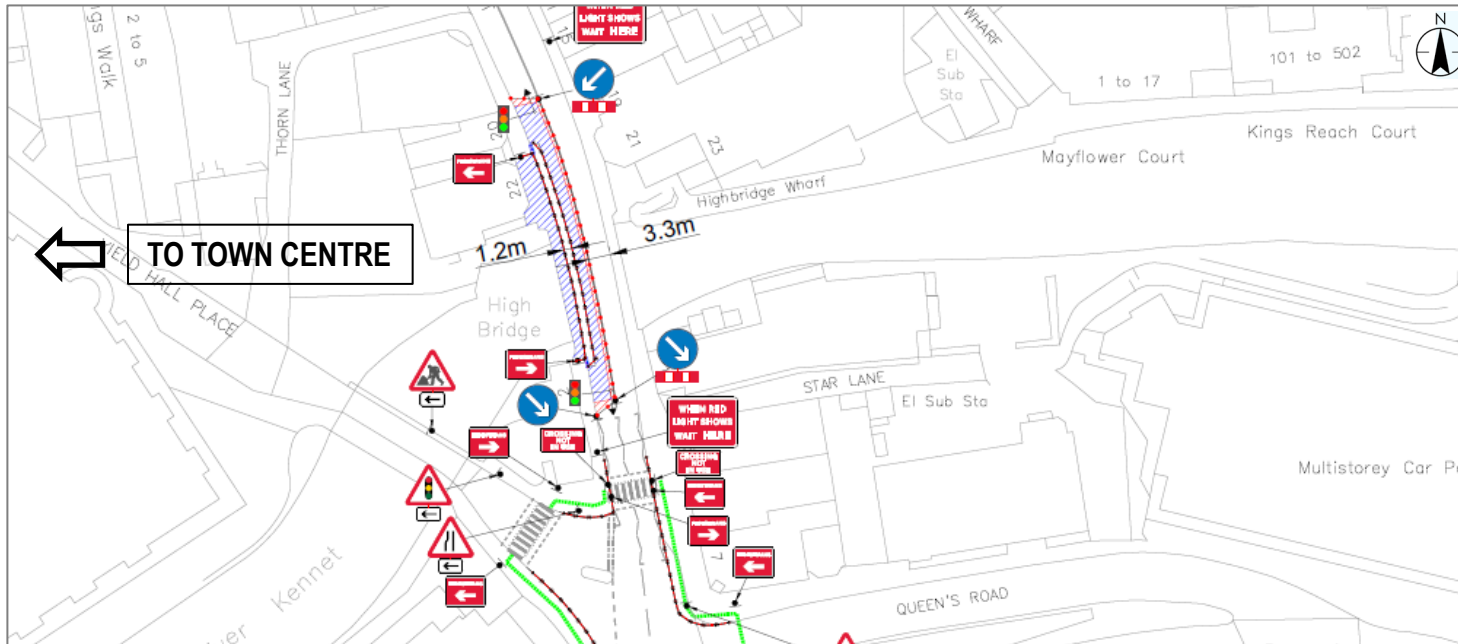
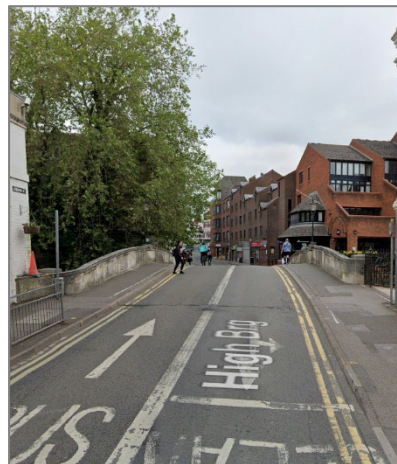


HIGH BRIDGE PARAPETS REPAIR WORKS



HIGH BRIDGE PARAPETS REPAIR WORKS

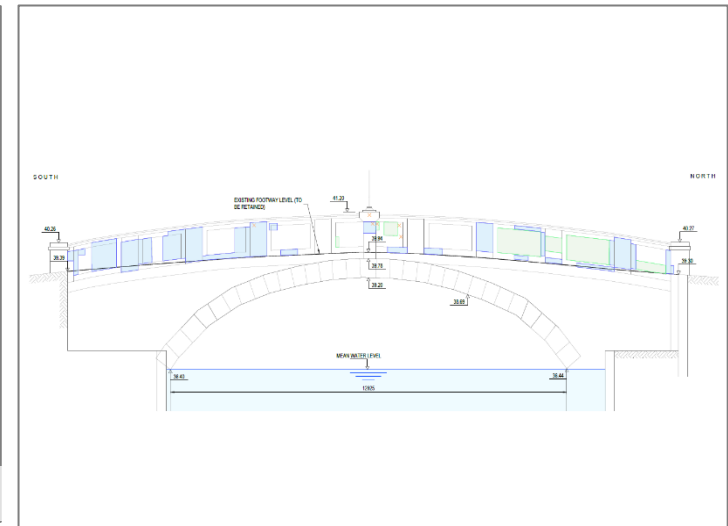
HIGH BRIDGE IS AN 18TH CENTURY GRADE II LISTED STONE ARCH BRIDGE THAT SPANS OVER RIVER KENNET IN READING TOWN CENTRE. THE BRIDGE HAS A CLEAR SPAN OF APPROX. 13m BETWEEN ABUTMENT FACES. THE THICKNESS OF THE STONE PARAPETS HAS BEEN REDUCED DUE TO WEATHERING AND SALT CRYSTALLISATION IN SOME AREAS AND COMPLETE LOSS OF SECTION IN ONE OF THE PARAPET PANELS. THE WORKS WILL INVOLVE REPAIRS OF THE PARAPETS BY RESTORING ITS THICKNESS BY MEANS OF APPLICATION OF MORTAR FOR SUPERFICIAL EROSION, PARTIAL DEPTH REPLACEMENT FOR DEEPER EROSION AND FULL PANEL REPLACEMENT FOR THE LOCATION WITH COMPLETE SECTION LOSS. A SINGLE LANE CLOSURE OF THE BRIDGE WILL BE REQUIRED THROUGHOUT THE WORKS AND 10 NIGHTTIME CLOSURES TO CARRY OUT WORKS ON THE TEMPORARY STRUCTURE.



VIEW TOWARDS NORTH



VIEW TOWARDS SOUTH



WEST ELEVATION OF THE BRIDGE