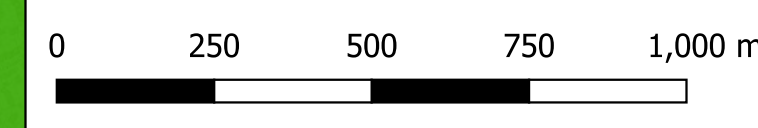
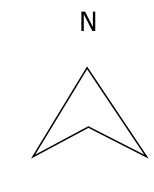




- Legend**
- ▬ Reading Borough Council Boundary
 - Soilscapes Classifications**
 - Freely draining acid but base-rich soils
 - Loamy & clayey floodplain soils with high GW
 - Loamy soils with naturally high groundwater
 - Freely draining slightly acid loamy soils
 - Slowly permeable seasonally wet acid loamy & clayey soils
 - Slightly acid loamy & clayey soils with impeded drainage
 - Shallow lime-rich soils over chalk or limestone
 - Unclassified Urban
 - Water

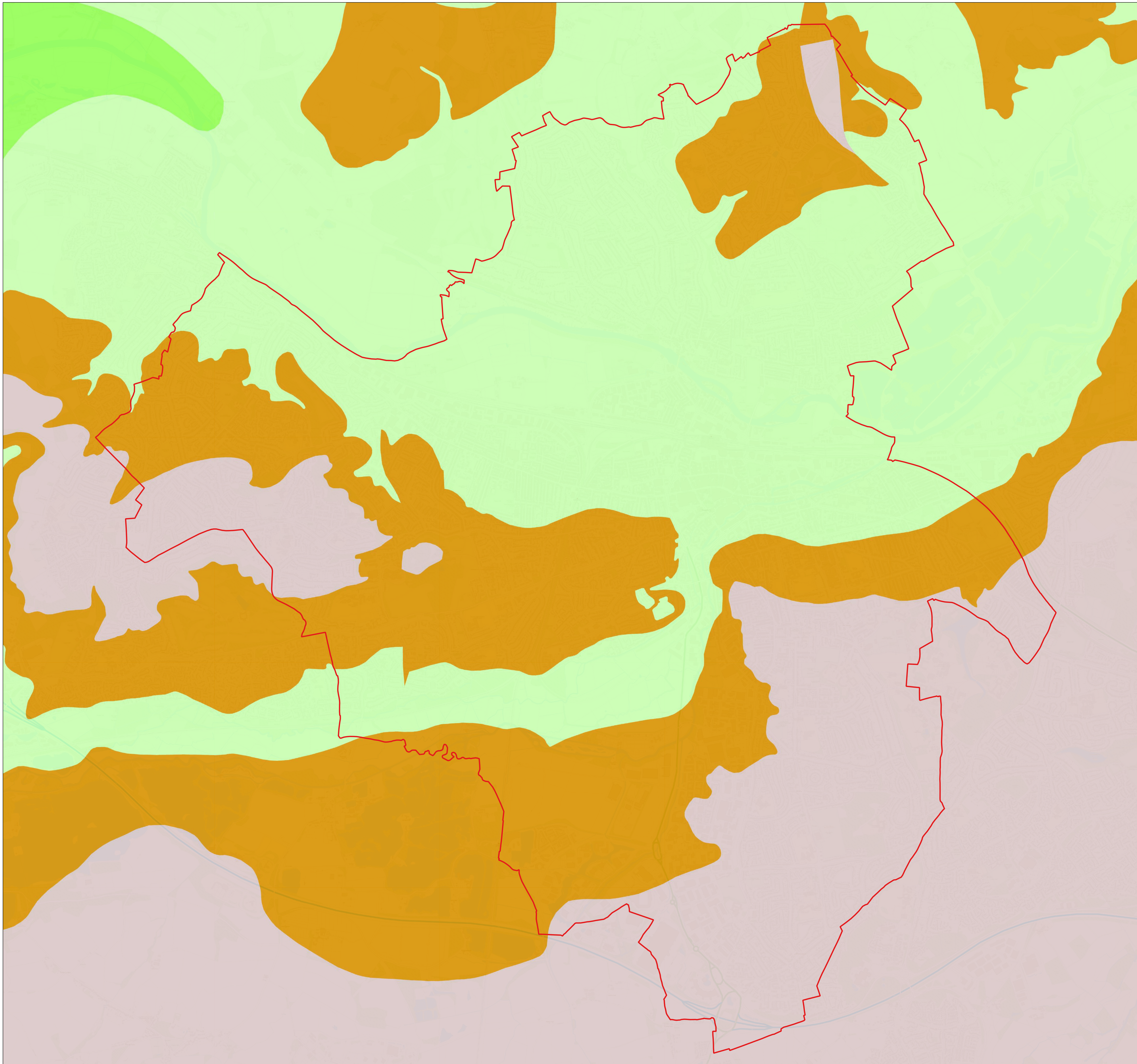


Project Title:
**Reading Borough Level 1
 Strategic Flood Risk Assessment**

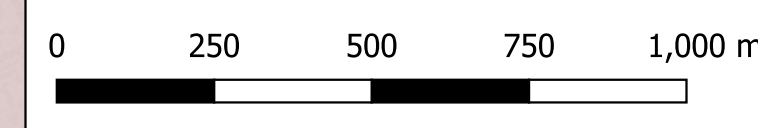
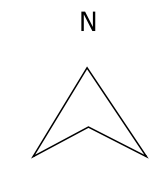
Figure Title:
Soilscapes Map in Reading Borough

Figure number:
WHS 10135-A04-001 A

Contains Ordnance Survey data © Crowncopyright and database 2024. Contains public sector information licensed under the Open Government Licence v3.0.



- Legend**
- Reading Borough Council Boundary
 - BGS 1:50k Bedrock
 - Seaford Chalk
 - London Clay Formation
 - Lambeth Group- Clay, Silt and Sand
 - Lewes Nodular Chalk



Project Title:
**Reading Borough Level 1
Strategic Flood Risk Assessment**

Figure Title:
**BGS 1:50k Bedrock Map in Reading
Borough**

Figure number:
WHS 10135-A04-001 B

Contains Ordnance Survey data © Crowncopyright and
database 2024. Contains public sector information
licensed under the Open Government Licence v3.0.

