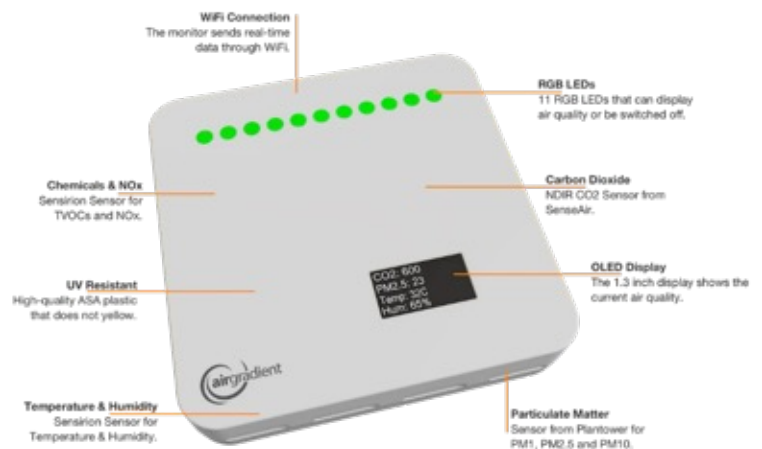


How to set-up your AirGradient ONE



Introduction

The Air Gradient ONE is a plug-in, indoor air quality monitor that measures PM^{2.5}, CO² and VOCs, and meteorological factors such as temperature and humidity. The data that has been collected can be seen in real time on the AirGradient dashboard and a programmable LED bar on the front of the monitor also shows real time changes in air pollution. The monitor can be attached to two stands which make it easy to stand up where you choose.



Usage Instructions / Issues, Warnings and Recommendations

What's in the Box?

- The box contains an assembled Air Gradient ONE, a 2m USB Type-C cable, a plug, two monitor stands and a screwdriver.

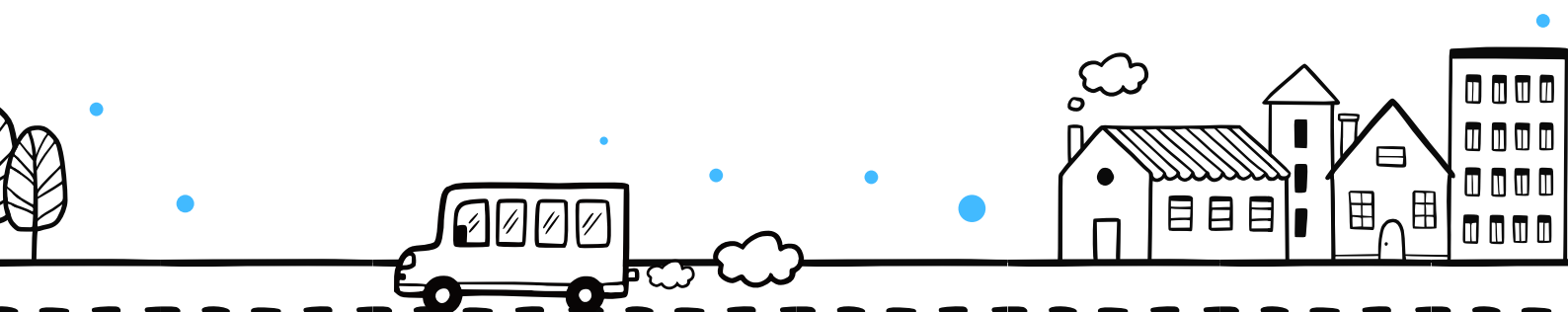
Turning the Air Gradient ONE On/Off

- To turn the monitor on/off connect it to/disconnect it from a power supply using the UBC Type-C cable.

First Time using the ONE and Connecting to Wi-Fi

The first time you use the monitor follow the instructions below:

- Plug in the monitor to turn it on.
- On your phone (make sure your phone is not connected to Wi-Fi) go to the Wi-Fi page on settings and select the monitor – it will show up as ag-xxxxxxxxxxxx (the x's are the devices serial number – note this down).
- Click on the 'Configure Wi-Fi' icon and select the Wi-Fi you want to connect the monitor to, insert the password then click 'Go'.
- Once the pop up disappears the device is connect to the Wi-Fi and will remember it and reconnect automatically when the monitor is turned on.



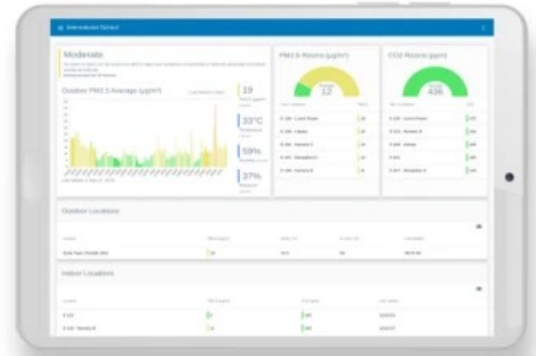
How to set-up your AirGradient ONE



Adding a ONE to the AirGradient Dashboard

To add the monitor to your dashboard follow the instructions below:

- In the 'Administration' section go to the 'Connect Sensors' page.
- Click the 'Next' icon on the 'Welcome back !' page.
- Select the 'Set up Air Gradient ONE Kit without QR Code' box.
- At the bottom of Step 1, click the 'Click here for next step' icon.
- Input the serial number, the place (the dashboard name), create a name for the monitor and click the 'add' icon.
- It could take a couple of minutes for the monitor to show up as running on your dashboard.
- Send the name of your dashboard to Stantec at William.Storey@stantec.com



Data Exportation

- To export the data collected, go to the 'Data Export' page from the menu page, select the monitor that you want the data from ('Select Location'), the frequency of the data that you want ('Select Bucket Size') and the date range that you want the data for.
- In terms of the frequency of data, 'raw' data provides a dataset with readings every 30/40 seconds from when it was last switched on however, this data is only accessible when the monitor is on and connected to the internet. This is due to the data being saved every 5 minutes.

Contact details

- For further information please email CALMERProject@stantec.onmicrosoft.com or scan the QR code below to access the Air Gradient Website for more information.

