

How to set-up your Air Gradient Open Air Set



Introduction

The AirGradient Open Air is a plug-in, outdoor air quality monitor that measures PM¹, PM^{2.5} and PM¹⁰, and meteorological factors such as temperature and humidity. The data that has been collected can be seen in real time on the AirGradient dashboard once it has been connected to Wi-Fi. The monitor can be mounted on both walls and poles with either screws or cable ties and is fully waterproof.



Usage Instructions / Issues, Warnings and Recommendations

What's in the Box?

- The box contains an assembled Air Gradient Open Air, a 4m USB Type-C cable, a plug and a screwdriver.

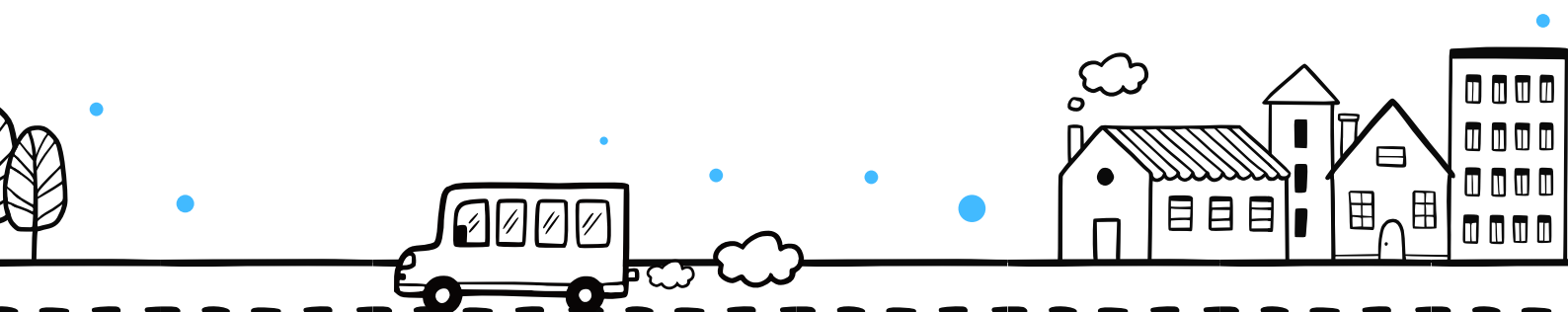
Turning the Open Air On/Off

- To turn the monitor on/off connect it to/disconnect it from a power supply using the UBC Type-C cable.

First Time using the Open Air and connecting to Wi-Fi

The first time you use the monitor follow the instructions below:

- Plug the USB Type-C connection into the monitor and the LED on the base will flash blue.
- On your phone (make sure your phone is not connected to Wi-Fi) go to the Wi-Fi page on settings and select the monitor - it will show up as airgradient-xxxxxxxxxxx (the x's are the devices serial number - note this down).
- Enter the base password - 'cleanair'.
- Click on the 'Configure Wi-Fi' icon and select the Wi-Fi you want to connect the monitor to insert the password then click 'Go'.
- Once the pop up disappears the device is connected to the Wi-Fi and will remember it and reconnect automatically when the monitor is turned on.



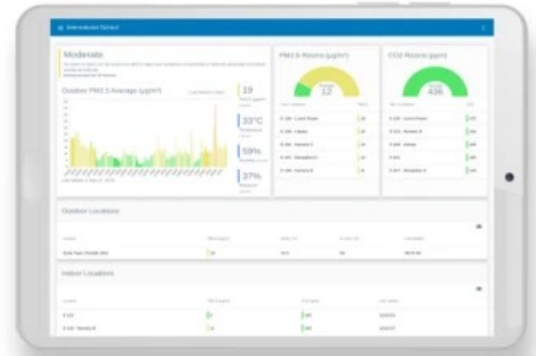
How to set-up your Air Gradient Open Air Set



Adding an Open Air to the AirGradient Dashboard

To add the monitor to your dashboard follow the instructions below:

- In the 'Administration' section go to the 'ConnectSensors' page
- Click the 'Next' icon on the 'Welcome back !' page
- Select the 'Set up Open Air Outdoor Monitor' box
- At the bottom of Step 1, click the 'Click here for nextstep' icon
- Input the serial number, the place (the dashboardname), create a name for the monitor, select 'O-1PP /O-1PPT (Open Air Gen 1 with 2x PMS5003T and TVOOptional)' and click the 'add' icon
- It could take a couple of minutes for the monitor to show up as running on your dashboard
- Send the name of your dashboard to Stantec at William.Storey@stantec.com



Data Exportation

- To export the data collected, go to the 'Data Export' page from the menu page, select the monitor that you want the data from ('Select Location'), the frequency of the data that you want ('Select Bucket Size') and the date range that you want the data for.
- In terms of the frequency of data, 'raw' data provides a dataset with readings every 30/40 seconds from when it was last switched on however, this data is only accessible when the monitor is on and connected to the internet. This is due to the data being saved every 5 minutes.

Contact details

- For further information please email CALMERProject@stantec.onmicrosoft.com or scan the QR code below to access the Air Gradient Website for more information.

