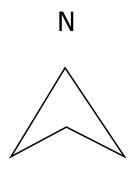




- Legend**
- Reading Borough Council Boundary
  - Soilscapes Classifications**
  - Freely draining acid but base-rich soils
  - Loamy & clayey floodplain soils with high GW
  - Loamy soils with naturally high groundwater
  - Freely draining slightly acid loamy soils
  - Slowly permeable seasonally wet acid loamy & clayey soils
  - Slightly acid loamy & clayey soils with impeded drainage
  - Shallow lime-rich soils over chalk or limestone
  - Unclassified Urban
  - Water



Project Title:  
**Reading Borough Level 1  
Strategic Flood Risk Assessment**

Figure Title:  
**Soilscapes Map in Reading Borough**

Figure number:  
**WHS 10135-A04-001 A**

Contains Ordnance Survey data © Crowncopyright and  
database 2024. Contains public sector information  
licensed under the Open Government Licence v3.0.