

# INDICES OF DEPRIVATION 2025 - BRIEFING NOTE

## Introduction

The most comprehensive and widely adopted overall measure of deprivation is the Indices of Deprivation (IoD). The indices were published by the Ministry of Housing, Communities & Local Government (MHCLG) in October 2025 and replace the previous 2019 Index of Multiple Deprivation.

The IoD provides a set of relative measures of deprivation for small areas across England, called Lower-layer Super Output Areas (LSOAs)<sup>1</sup>. These are ranked from 1 (the most deprived area) to 33,755 (the least deprived area). The datasets include deprivation statistics for Reading's 100 LSOAs.

Although the IoD is designed primarily to be a small-area or neighbourhood measure of relative deprivation, LSOA level outputs have been aggregated and can be used to describe relative deprivation for local authorities. This allows each of the 296 local authority areas to also be given a rank (with a rank of 1 being the most deprived, and 296 being the least deprived).

## IoD domains

The IoD 2025 comprises of 7 standalone indices (domains), which are combined and weighted together to form the Index of Multiple Deprivation 2025 (IMD25). The IoD is the official measure of deprivation in England.

The IoD domains and weightings are:

- Income (22.5% of overall score)
  - the index of income deprivation affecting children (IDACI)
  - the index of income deprivation affecting older people (IDAOPI)
- employment (22.5%)
- education skills and training (13.5%)
- health (13.5%)
- barriers to housing and services (9.3%)
- living environment (9.3%)
- crime (9.3%)

## How can the IoD be used?

The IoD 2025 can be used to identify the most deprived neighbourhoods and compare, relatively, areas across England, to explore the domains (or types) of deprivation, and to compare local authorities. In addition, snapshot in time comparisons can be made with previous indices, when accompanied with appropriate caveats around changes (see below).

## Overall headlines:

- According to the overall IMD, Reading as a whole is ranked the **147<sup>th</sup><sup>2</sup> most deprived** out of 296 local authorities in England, which puts Reading on the **50<sup>th</sup> percentile**, i.e. average.
- **Deprivation is higher than average** for the following domains: Income, Education, Skills and Training, Barriers to Housing and Services, Crime and in particular Income Deprivation Affecting Older People.

---

<sup>1</sup> On average 1,500 residents or 650 households

<sup>2</sup> Rank of average score

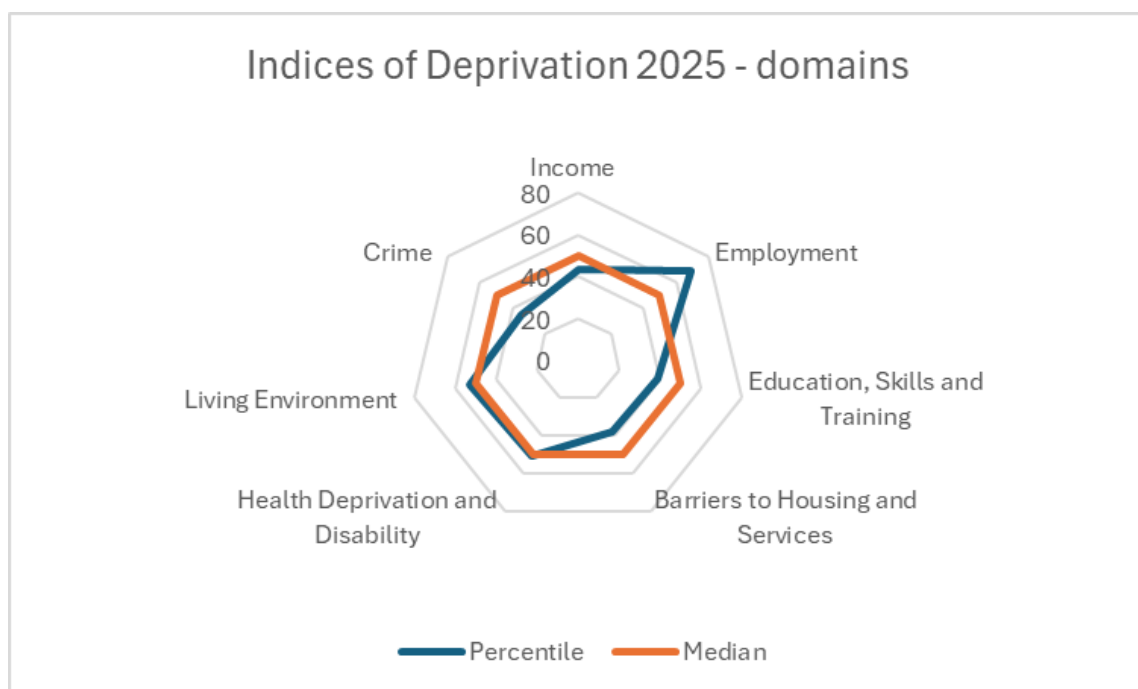
- There are now **no LSOAs within the most deprived 10% nationally** (compared with 5 in 2019). 11 LSOAs are within the 20% most deprived. This does not necessarily mean that deprivation has improved in absolute terms these areas, only that it has improved relative to other LSOAs in England.
- There are **LSOAs in the most deprived 5% nationally** in terms of the following domains: Education, Skills & Training (including both sub-domains), Crime (none in 2019) and Income Deprivation Affecting Older People. There are also LSOAs in the 5% most deprived in terms of the 'wider barriers' (Barriers to Housing & Services) and 'outdoor' (Living Environment) sub-domains.
- Notably, one LSOA in Church is within the **most deprived 1% nationally** on the Education, Skills & Training domain.

### Comparison with IoD 2019

The IoD 2025 outputs are less directly comparable to previous indices due to new datasets, methodologies and geographies have been used. Overall, a total of 55 indicators comprise the IoD25, an increase from 39 in the IoD19. Of these, 20 are new indicators, 14 indicators have been significantly modified, while 21 have been updated to more recent timepoints. Three indicators have also been removed.

However, comparisons can be made only in terms of comparing the rankings as a snapshot in time.

- **Reading is slightly less deprived (relatively) than in 2019**, when Reading was 141st most deprived out of 317 authorities nationally (putting Reading on the 45th percentile, compared with 50<sup>th</sup> in the new index).
- **Relative deprivation has decreased since the 2019 index for all of the domains except Education, Skills & Training and Income Deprivation Affecting Older People**, where deprivation has increased.



## IoD 2025 domains and sub-domains

|                                                                       | <i>Rank of average score<sup>3</sup> (higher is better)</i> | <i>Rank of average score percentile<sup>4</sup> (higher is better)</i> | <i>LSOAs in 20% most deprived</i> | <i>LSOAs in 10% most deprived</i> | <i>LSOAs in 5% most deprived</i> |
|-----------------------------------------------------------------------|-------------------------------------------------------------|------------------------------------------------------------------------|-----------------------------------|-----------------------------------|----------------------------------|
| <b>IMD overall score</b>                                              | 147                                                         | 50                                                                     | 11                                | 0                                 | 0                                |
| <b>Domains:</b>                                                       |                                                             |                                                                        |                                   |                                   |                                  |
| Income                                                                | 129                                                         | 44                                                                     | 11                                | 1                                 | 0                                |
| Employment                                                            | 203                                                         | 69                                                                     | 6                                 | 1                                 | 0                                |
| Education, Skills and Training                                        | 116                                                         | 39                                                                     | 12                                | 7                                 | 3                                |
| Barriers to Housing and Services                                      | 112                                                         | 38                                                                     | 7                                 | 3                                 | 0                                |
| Health Deprivation and Disability                                     | 151                                                         | 51                                                                     | 3                                 | 0                                 | 0                                |
| Living Environment                                                    | 157                                                         | 53                                                                     | 10                                | 2                                 | 0                                |
| Crime                                                                 | 103                                                         | 35                                                                     | 7                                 | 4                                 | 2                                |
| <b>Supplementary indices</b>                                          |                                                             |                                                                        |                                   |                                   |                                  |
| Income Deprivation Affecting Older People                             | 50                                                          | 17                                                                     | 14                                | 11                                | 3                                |
| Income Deprivation Affecting Children Index                           | 143                                                         | 48                                                                     | 7                                 | 2                                 | 0                                |
| <b>Sub-domains:</b>                                                   |                                                             |                                                                        |                                   |                                   |                                  |
| Children and Young People                                             | n/a                                                         | n/a                                                                    | 11                                | 11                                | 3                                |
| Adult Skills                                                          | n/a                                                         | n/a                                                                    | 12                                | 9                                 | 3                                |
| Geographical Barriers ( <i>physical proximity of local services</i> ) | n/a                                                         | n/a                                                                    | 0                                 | 0                                 | 0                                |
| Wider Barriers ( <i>access to housing inc affordability</i> )         | n/a                                                         | n/a                                                                    | 42                                | 13                                | 2                                |
| Indoors ( <i>quality of housing</i> )                                 | n/a                                                         | n/a                                                                    | 8                                 | 2                                 | 0                                |
| Outdoors ( <i>air quality and road traffic accidents</i> )            | n/a                                                         | n/a                                                                    | 10                                | 3                                 | 1                                |

### Further information

There is further information from the Ministry of Housing, Communities & Local Government is available [here](#).

An interactive map allowing you to explore the data is available [here](#).

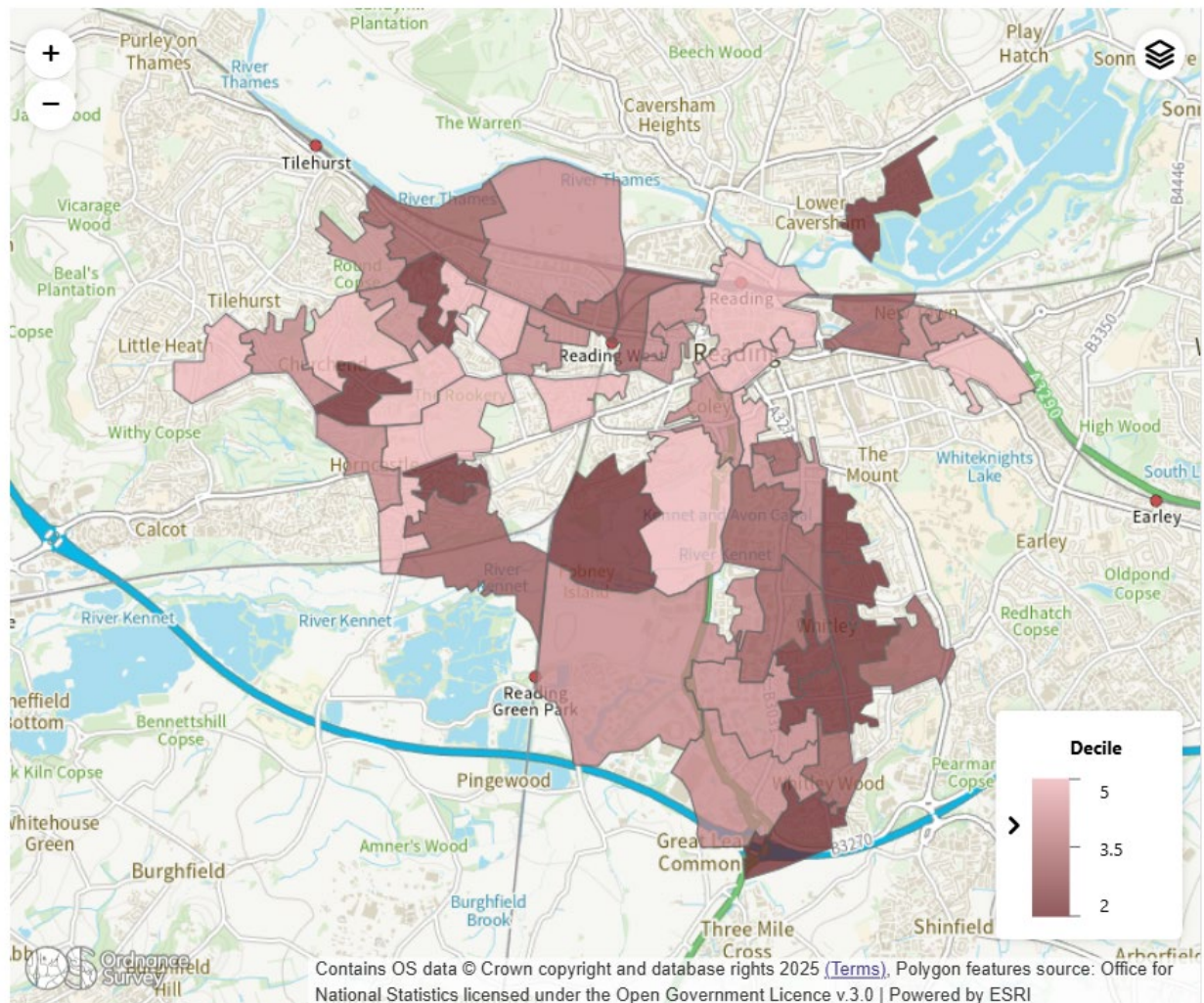
<sup>3</sup> out of 296 LAs

<sup>4</sup> 1<sup>st</sup> decile = most deprived

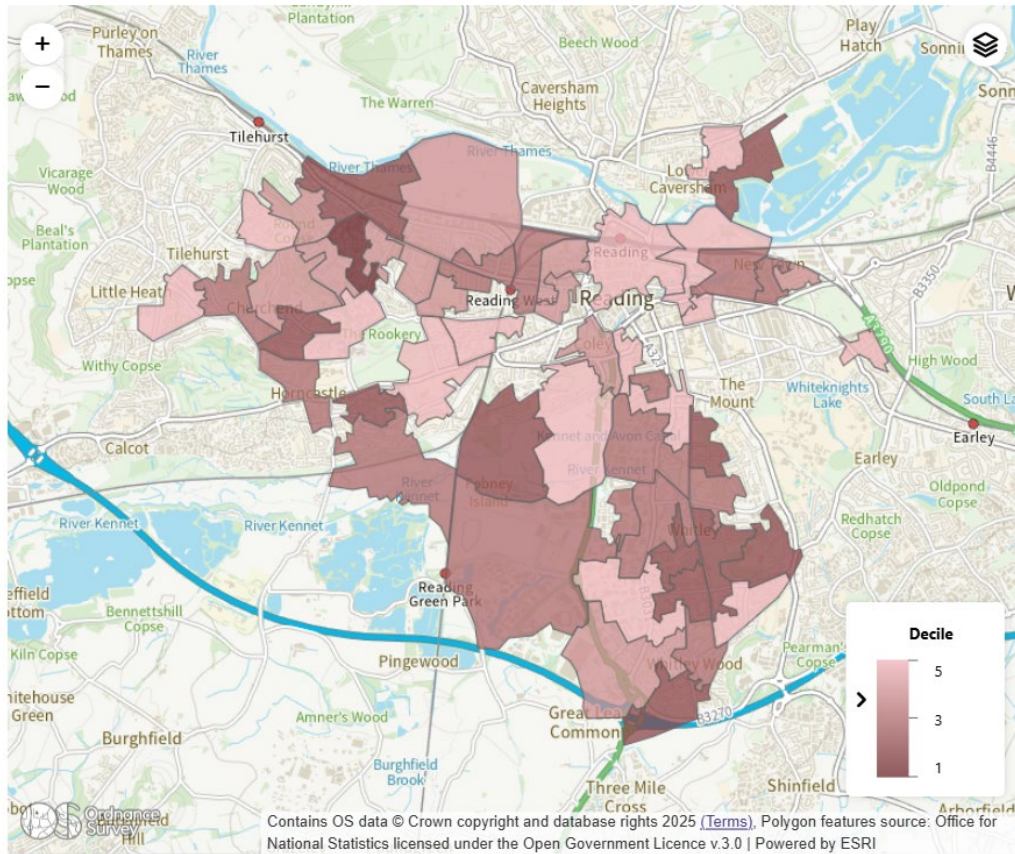
## IoD 2025 maps

The following maps are for the overall Index of Multiple Deprivation and the domains and supplementary indices. They show the LSOAs in deciles 1-5 nationally. Darker shading shows areas that are more deprived (i.e. decile 1 = 10% most deprived nationally).

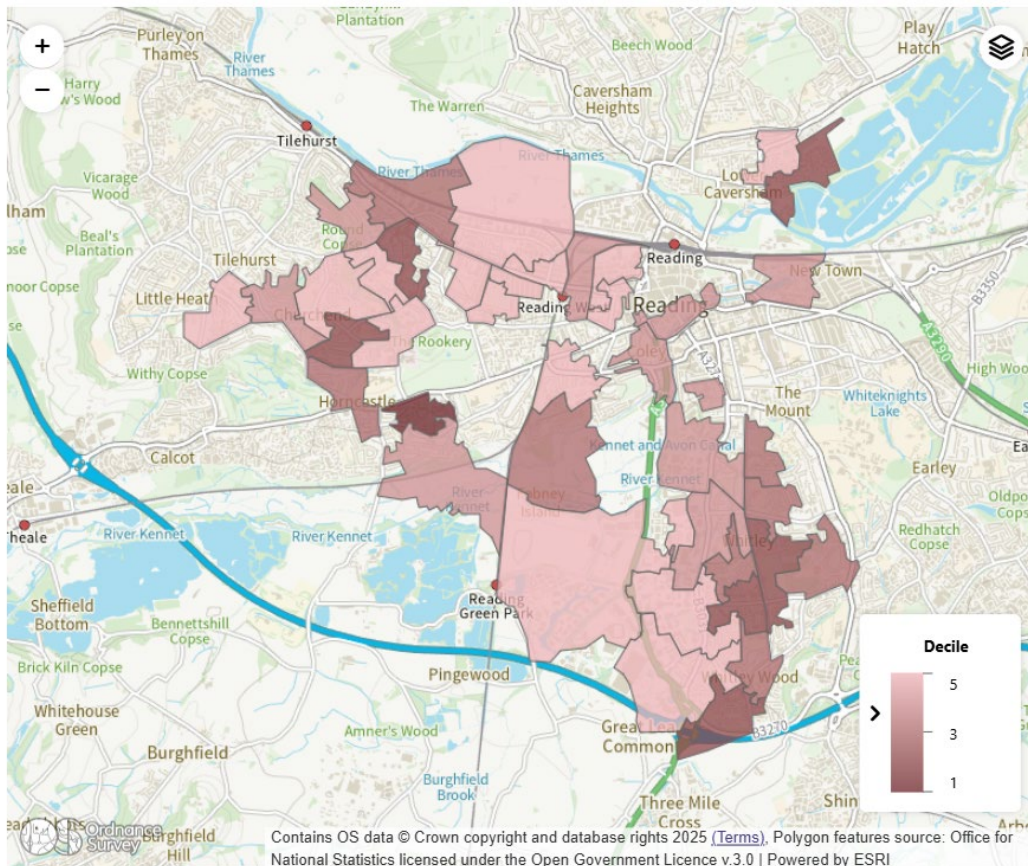
### Index of Multiple Deprivation



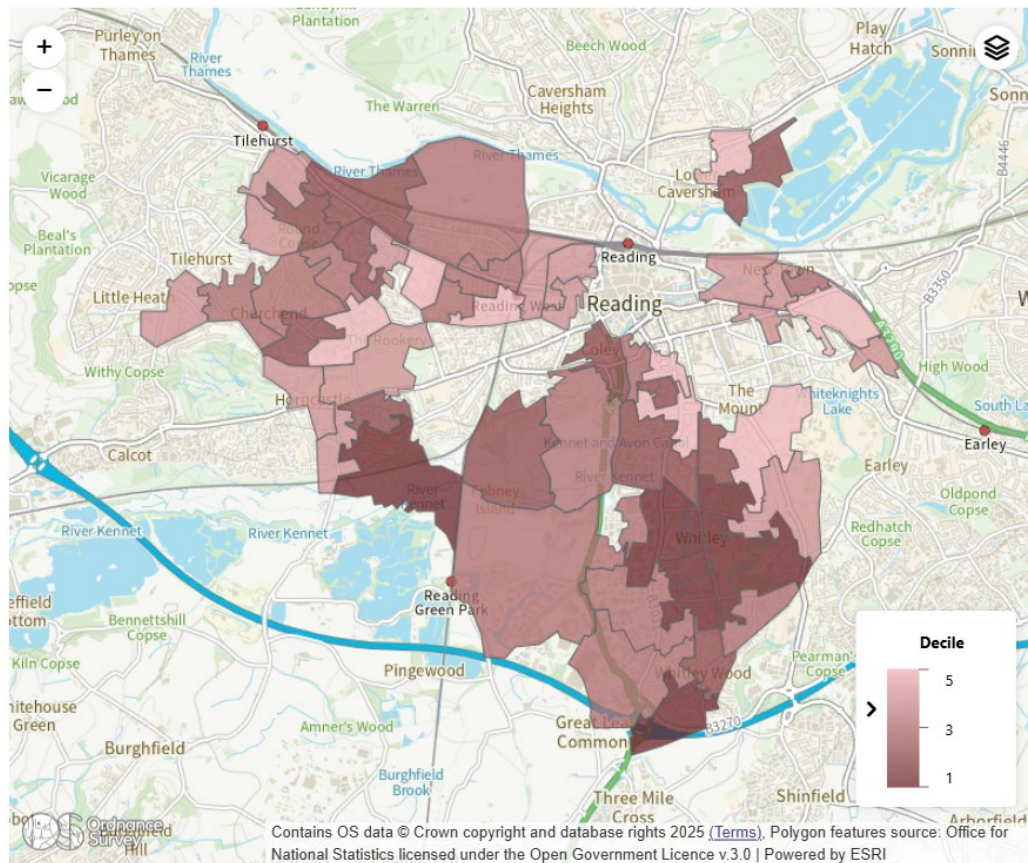
## Income



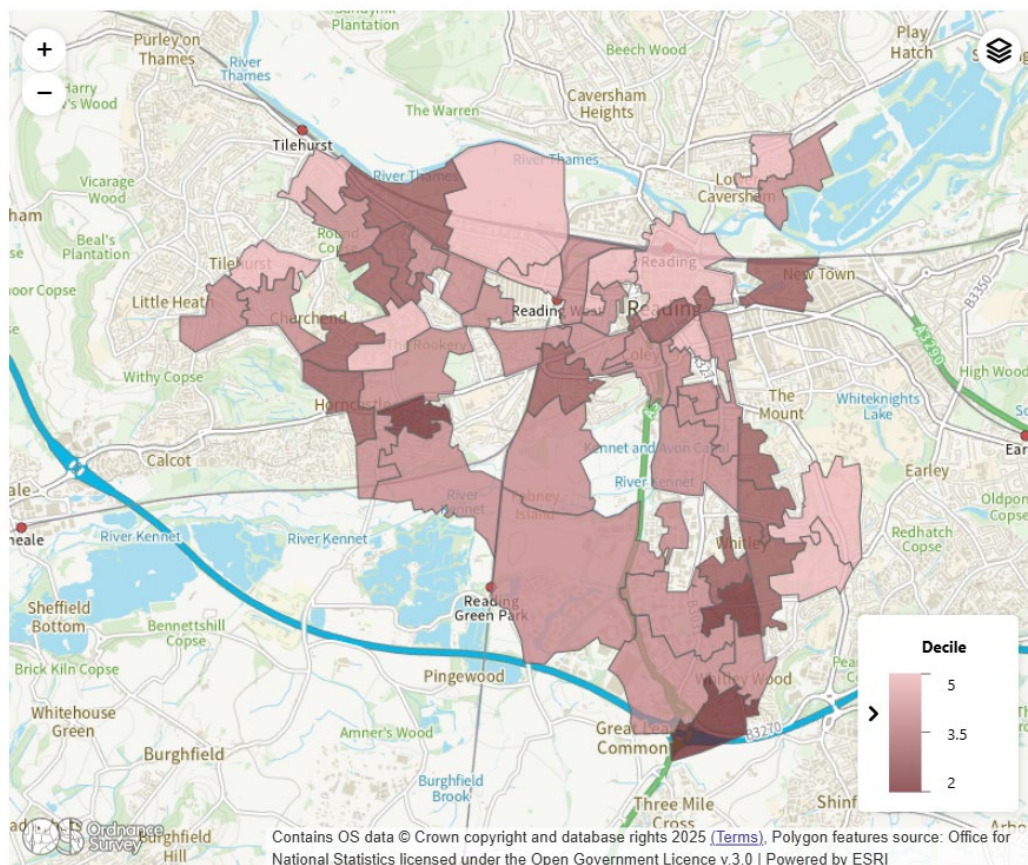
## Employment



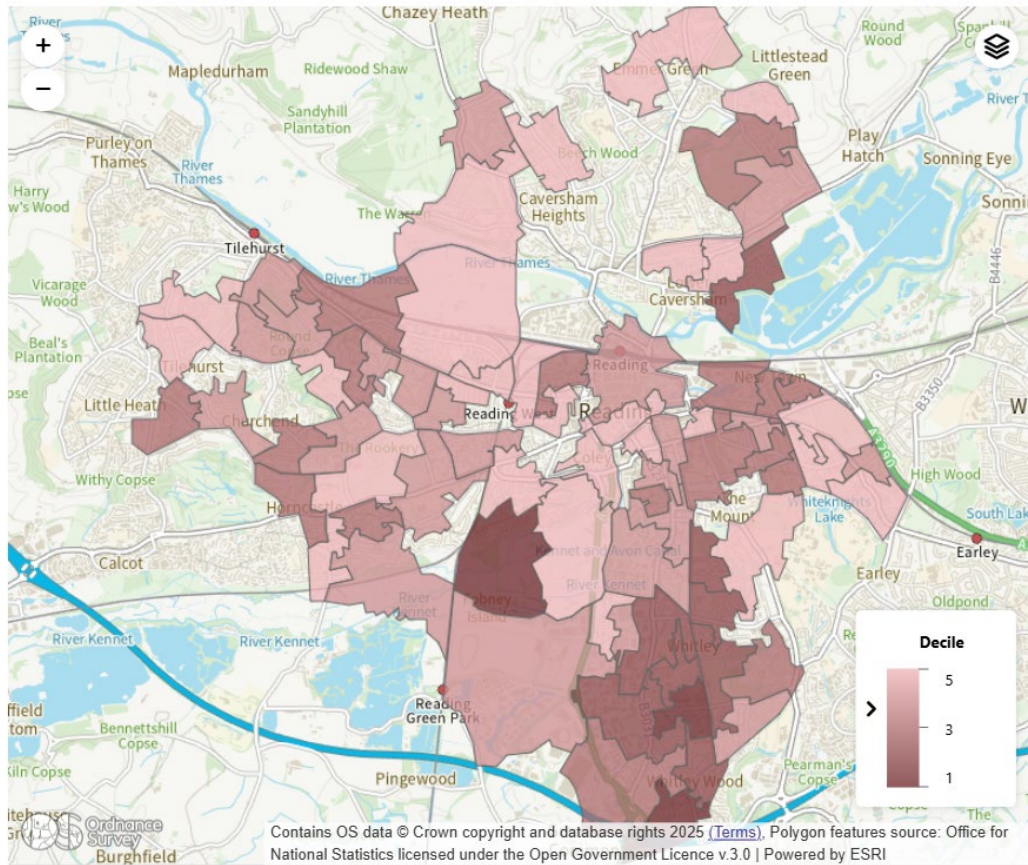
## Education, Skills and Training



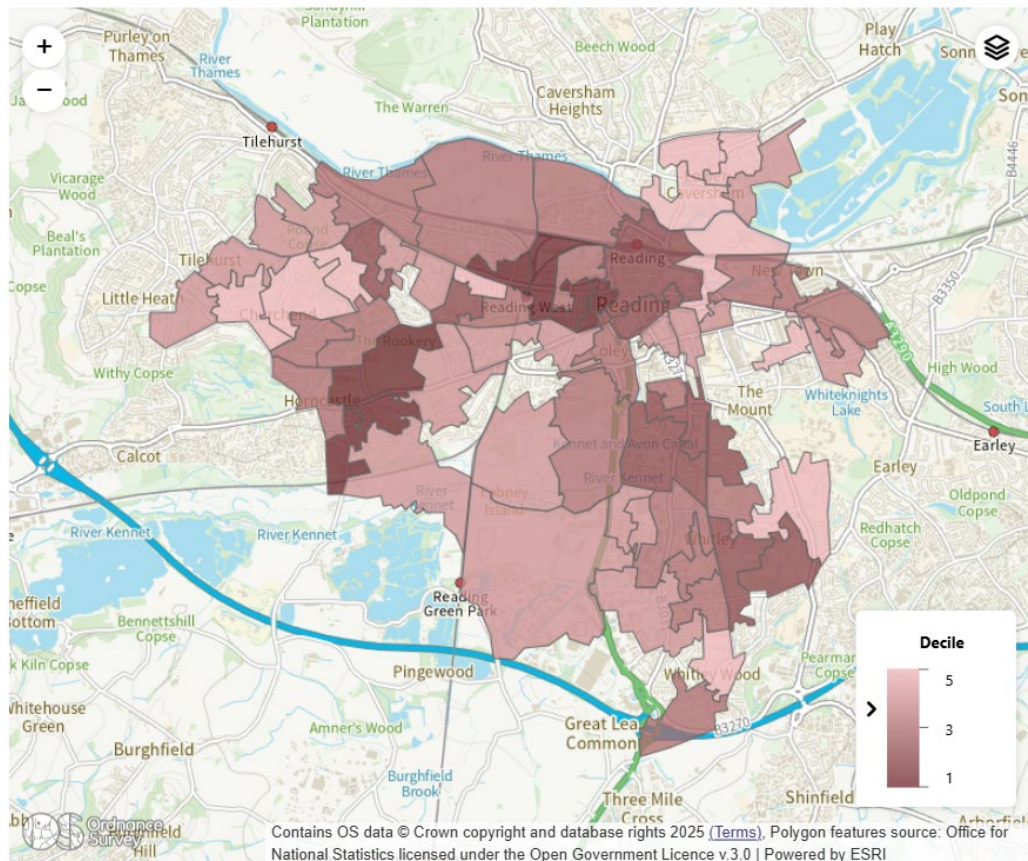
## Health Deprivation and Disability



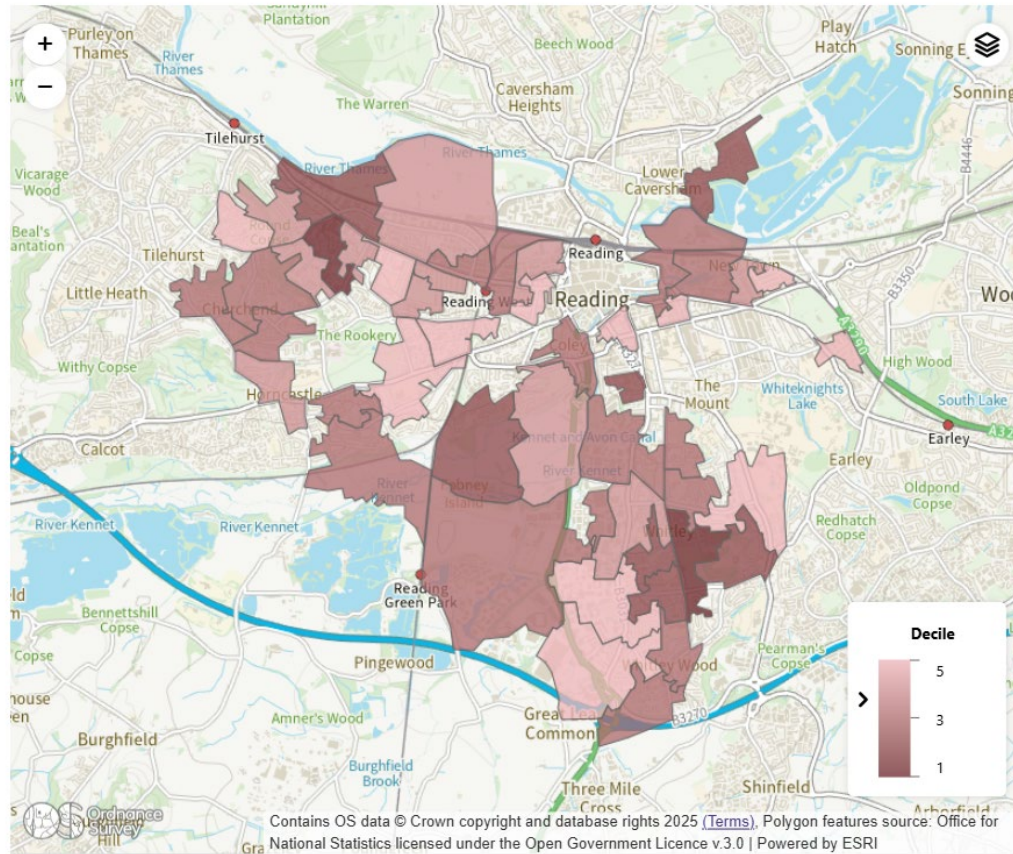
## Barriers to Housing and Services



## Crime



## Income Deprivation Affecting Children



## Income Deprivation Affecting Older People

